

Feedback

Canadian Aviation Service Difficulty Reports

The following content was published between April 1, 2018 and July 13, 2018.

Table of Contents

Feedback Canadian Aviation Service Difficulty Reports.....	1
Head's Up.....	3
Aerospatiale, ATR 42	3
Wheel Assembly Tie Bolt Failures	3
Boeing, 757-2B7	4
The Effects of Skydrol.....	4
Fixed Wing.....	4
Aerospatiale, ATR-72-202.....	4
Mystery Bang Leads to Discovery of Severe Damage	4
Aerospatiale, ATR 42 500	5
Attentive Walk Around Leads to Abnormal Discovery	5
Bombardier, CL-600-2D15	5
Fuel Imbalance and Ejector Line Internal Crack.....	5
de Havilland – Canada, DHC-8-400	6
Cracked Brake Fitting	6
Douglas, DC3C	6
Attentive Walk Around Prevents Possible Incident.....	6
Mitsubishi – USA, MU 2B60	7
Nose Gear Actuator Boot, Band Clamp Slippage.....	7
Engine	8
Allison, 250-C47B	8
Engine Outer Combustion Case Cracked Fuel Nozzle Boss.....	8
General Electric, CF6-80C2B7F.....	9
Fuel Contamination Caused by Superabsorbent Polymers	9
Rolls Royce – USA, 250-C300/A1	10

Forgotten Plugs Found in Oil Holes	10
Teledyne Continental, LTSIO-360-EB	10
Connecting Rod Bolt Discrepancy	10
Hangar Noise.....	11
Bombardier, CL-600-2D24	11
Nose Landing Gear Damaged on Push-Back	11
Equipment Airworthiness Directives (ADs).....	13
FAA Special Airworthiness Information Bulletins (SAIB)	14
EASA Safety Information Bulletin (SIB).....	14
FAA Unapproved Parts Notifications (UPNs)	15
Service Difficulty Reports (SDR)	15

Head's Up

Aerospatiale, ATR 42

Wheel Assembly Tie Bolt Failures

Subject:

It has come to the attention of Transport Canada through the Web Service Difficulty Reporting System (WSDRS) that numerous operators of the ATR-42 series aircraft, have had main wheel tie bolts found sheared or missing.

Over the past year, nine SDRs have been submitted via the WSDRS for this problem.

Typically, the operators have reported hearing an odd sound emanating from the wheel assembly while towing the aircraft in the hangar or from the gate. Upon further inspection, most operators find the remains of a tie bolt loose within the cavity between the brake system and the wheel. Other operators have detected the problem upon removal of the wheel assembly, due to tire wear or one operator found the wheel assembly would not hold air pressure.

The manufacturer of the wheel assemblies, Meggitt Aircraft Braking Systems, issued service bulletin (SB) ATR42-32-33, dated June 14 1999, to attempt to address this issue. Meggitt has introduced through this SB an increased torque value and torquing sequence for the tie bolts, as well as specific cautions as to the use of power and automatic tightening devices.

Most operators send their wheel assemblies out to overhaul facilities for repair and non-destructive testing (NDT) as applicable. It is recommended that the operator ensure the overhaul facility is following the most up-to-date information prior to performing the overhaul and assembly of these wheel assemblies. Special attention should be given to the tie bolts themselves. The Meggitt component maintenance manual (CMM) for the wheel assemblies in the part number 5006856 series has specific instructions pertaining to the inspection of the bolts and nuts, including a Magnetic-Particle Inspection (MPI) for cracks, paying particular attention to the radius under the bolt head and to the threads adjacent to the bolt shank.

The CMM also states "An equivalent bolt maintenance program may be established by aircraft operators with service experience whereby bolts are replaced based on usage."

Transport Canada recommends following the CMM and SB ATR42-32-33 while operating these wheel assemblies. Doing this should give operators of the ATR-42 series aircraft the life expected from these components.



Sheared nuts from main wheel tie bolts

Boeing, 757-2B7

The Effects of Skydrol

SDR #: 20171004006

Subject:

While approaching the gate, the crew noticed a "left hyd. Qty." warning message appear. The aircraft was brought to a stop at the gate, and shut down normally. Maintenance noticed a large hydraulic leak from the left gear bay, and a total of 5 ramp personnel assisting with marshaling the aircraft were exposed to the atomized skydrol as a result of the high pressure leak. The ramp personnel affected were taken to the hospital with various symptoms, including vomiting. Maintenance staff found the cause of the leak, which turned out to be a ruptured hydraulic line going to the down lock actuator, and subsequently replaced the unserviceable component.

Transport Canada Comments:

This SDR reminds us of the effects of Skydrol on the body. These individuals were not expecting to be in contact with the chemical. When you are anticipating the potential of contact with Skydrol, please wear proper personal protective equipment (PPE) such as gloves and eye protection.

Fixed Wing

Aerospatiale, ATR-72-202

Mystery Bang Leads to Discovery of Severe Damage

SDR #: 20170516007

Subject:

The aircraft was on an overnight stay when a mechanic opened the passenger/crew entry door. As the door was almost entirely open, the mechanic heard a loud bang and the weight of the door increased suddenly. Investigation revealed that the passenger door forward-lower counterbalance spring anchorage fitting had separated from the aircraft. Further investigation showed the intercostal plate to which the anchorage fitting was attached had cracked and let go from the rest of the aircraft structure.

Transport Canada Comments:

Transport Canada recommends that all ATR-72 operators who have aircraft Manufacturer Serial Number 737 and prior, incorporate service bulletin (SB) no. ATR72-53-1086. This SB encompasses the addition of stronger fasteners on the attach fitting with intent of preventing such a failure. As always, follow the manufacturer's instructions for continued airworthiness (ICA) and all instructions embodied within service bulletins.

In this instance, the mechanic was fortunate that the door was near end travel and almost open. Had the door been in a higher position an injury may have occurred.



Aerospatiale, ATR 42 500

Attentive Walk Around Leads to Abnormal Discovery

SDR #: 20170607015

Subject:

While performing a crew walk around, it was noticed that the lens part of the left-hand NAV light cover assembly was missing. The lens must have come off during previous flight. The left-hand NAV light cover assembly was then replaced and the aircraft returned to service.

Transport Canada Comments:

Although this might seem like a small occurrence, it reminds us all that a slow attentive walk around can lead to abnormal discoveries.



Wing tip with no lens

Clean surface with no lens

Bombardier, CL-600-2D15

Fuel Imbalance and Ejector Line Internal Crack

SDR #: 20161219005

Subject:

A fuel imbalance caution message occurred in flight. After the system troubleshooting was complete, maintenance found the right-hand primary ejector fuel feed flex line cracked internally. The cracked line was part number (P/N) R27169-1 (vendor P/N CC670-62022-4). The part appeared to be original equipment.

A new line was installed and the system was tested for leaks and proper function.

Transport Canada Comments:

A review of the SDR database notes (4) cases of a fuel imbalance but this is the only case of a cracked feed line.

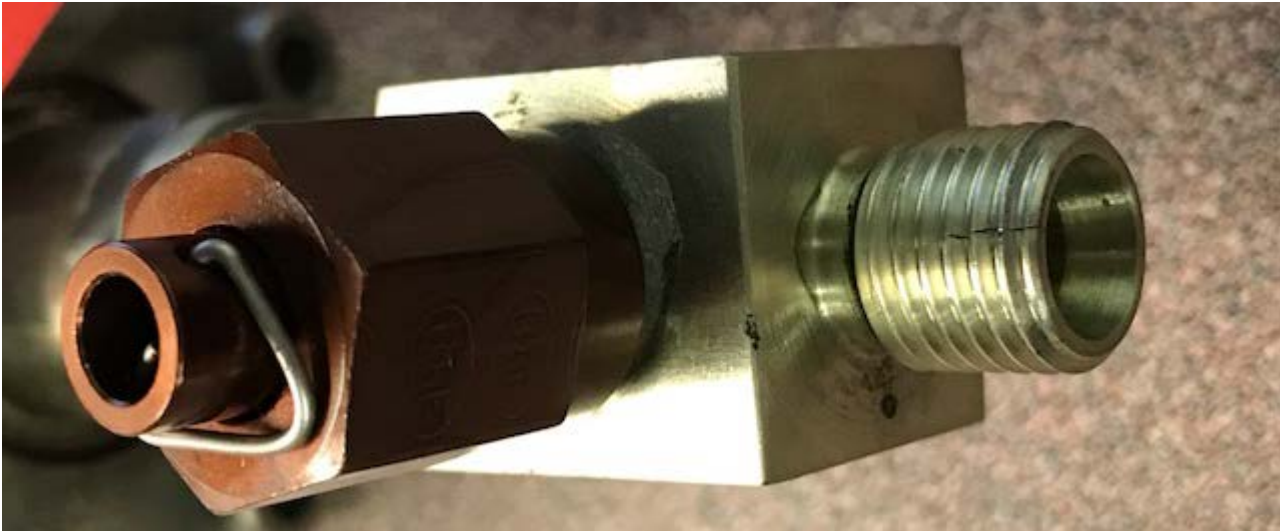
de Havilland – Canada, DHC-8-400

Cracked Brake Fitting

SDR #: 20170918003

Subject:

During ground handling, a hydraulic leak was noted from the #1 nacelle. Maintenance investigation determined that both brake fuse/shuttle assemblies were leaking from the lower (parking brake) fittings. The fittings were found to be cracked perpendicular to the threads. The fuses were replaced and the aircraft was subsequently released for service.



Cracked brake fitting

Douglas, DC3C

Attentive Walk Around Prevents Possible Incident

SDR #: 20170614007, 20171127017

Subject:

During two separate incidents, an operator of the DC3C with the Basler turbo prop conversion has found cracked outboard elevator attachment hinge fittings. The first incident occurred during a pilot pre-flight walk around. The pilot was checking for free play at the left-hand elevator and noted a clunking sound while shaking the elevator. Further investigation found that the left-hand outboard elevator attachment hinge horn was broken at the bolt attachment.

The second incident occurred during a 150-hour inspection. A close visual inspection of the elevator attachment hinge fitting, located on the right-hand outboard stabilizer location, showed signs of cracked paint. The AME further examined the area closely with a borescope and detected a crack. The crack was not visually detectable without the aid of magnification, such as a borescope, due to the limited access while the elevator is installed.

In both cases, the elevator attachment hinge was replaced with a serviceable part and the aircraft returned to service.

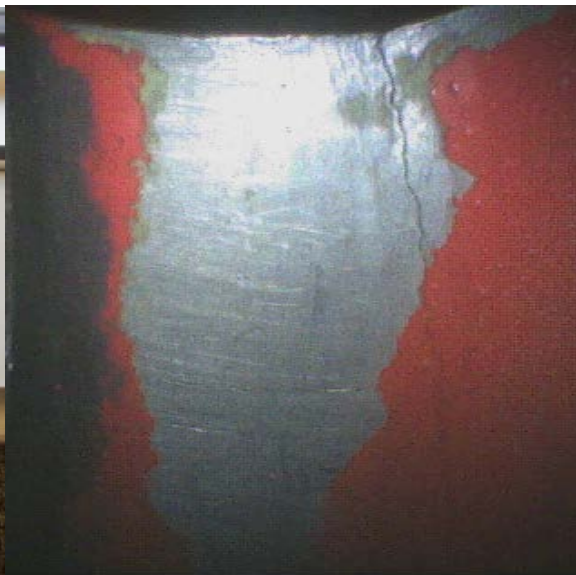
Transport Canada Comments:

Had it not been for an attentive pilot performing the usual pre-flight walk around or an eager AME performing the same old 150-hour inspection, these snag may have gone unnoticed. Remember the dirty dozen and avoid complacency.

“Today is the day I will find something!”



Hinge with missing piece



Borescope view of hinge end with crack

Mitsubishi – USA, MU 2B60

Nose Gear Actuator Boot, Band Clamp Slippage

SDR #: 20171211018

Subject:

During routine inspection, the nose landing gear actuator boot clip had slipped off the actuator boot and was found wedged into the actuator arm. This caused the nose gear to only engage the down lock by a fraction of what it should have been.

All other aircraft were inspected, and no other defects found. A memo was issued to all maintenance staff, and an additional inspection was added to the 100 hour inspection to highlight this area.

Transport Canada Comments:

Maintainers are reminded of the importance of performing attentive and thorough inspections. By finding this defect on the ground, observant maintenance staff may have prevented a failure that could have adversely affected the safe landing of the aircraft.

Engine

Allison, 250-C47B

Engine Outer Combustion Case Cracked Fuel Nozzle Boss

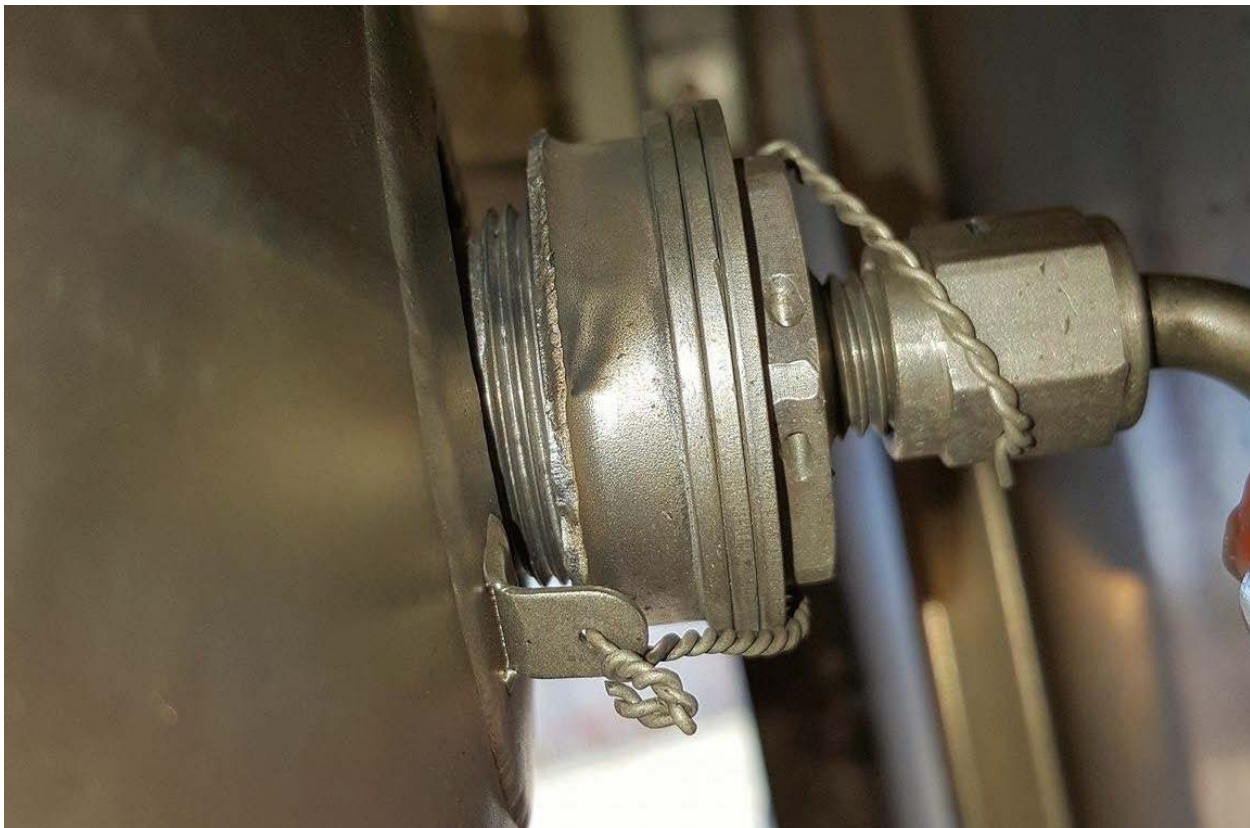
SDR #: 20160505004

Subject:

During aircraft startup, the pilot noticed high turbine outlet temperature and shut down the engine. The aircraft maintenance engineer discovered that the fuel nozzle boss was separated from the can at weld/radius.

Transport Canada Comments:

Rolls Royce has acknowledged additional instances of potential outer combustion case cracking by issuing Revision 3 to M250-C47 CEB A-72-7002. The latest revision decreases the interval of the repetitive visual inspection for the weld size at the fuel nozzle boss. Remain vigilant when inspecting this area. Cracking and separation of the fuel nozzle boss could lead to potential power and performance reduction. Additional Alert Commercial Engine Bulletins have been released to also cover the M250-C28, -C30 & -C40 series Roll Royce engines.



Fuel nozzle boss separated from the engine outer combustion case

General Electric, CF6-80C2B7F
Fuel Contamination Caused by Superabsorbent Polymers
SDR #: 20170614013

Subject:

A CF6-80C engine's Hydro Mechanical Unit (HMU) was returned, reporting the aircraft had an inflight shut down with no fuel flow on the left hand engine.

Foreign object damage (FOD) was noted through the area and opened ports. FOD appeared to be all through the overspeed governor bracket and port areas through the bracket as well. The fault was confirmed during analysis of the electrohydraulic servo valves (EHSV's). The substance was identified as superabsorbent polymers (SAP) (polymers that can absorb and retain large amounts of liquid). A common SAP use is in disposable diapers.

Fuel delivery systems at airports around the world use filter monitors with SAP elements to remove water from fuel. SAP may be released into the fuel by improper fuel handling equipment maintenance, cleaning, operation and other scenarios.

SAP particles are typically in the 5 to 20 micron size range and may not be visible, but can be up to 750 microns (0.030 in., visible).

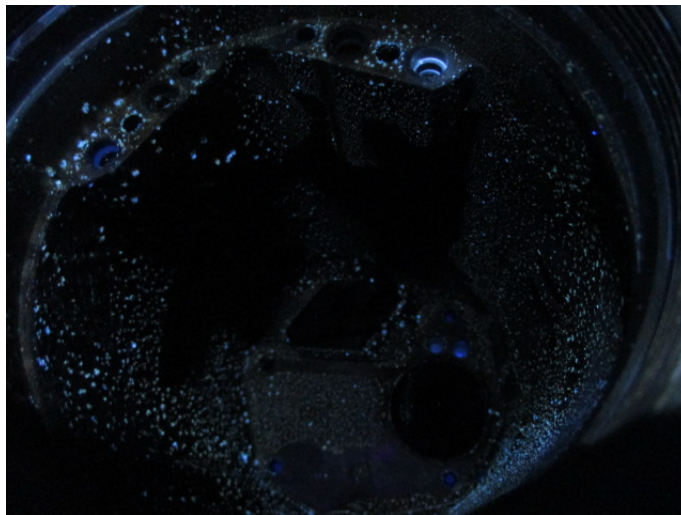
SAP can be identified through black light inspection (SAP will fluoresce in black light) and through chemical testing using sulfate pentahydrate (SAP will turn blue when exposed to this chemical).

The HMU had a contamination overhaul performed, power flushing of main housing and EHSV's solenoids, and was then returned to service.

The sister HMU from the same aircraft was returned for investigation. There were signs of minor SAP contaminates in some low flow areas and on external surfaces of the HMU, but not as severe.

Transport Canada Comments:

If an operator suspects they have received contaminated fuel, the airframe manufacturer's instructions must be followed to help ensure safe operation of their aircraft.



Superabsorbent polymer contamination made visible under a black light

Rolls Royce – USA, 250-C300/A1
Forgotten Plugs Found in Oil Holes

SDR #: 20170424012

Subject:

The gearbox cover was sent to our facility for overhaul. The power take-off (PTO) bearing cage was removed for machining of previous plasma repair. The machinist noticed that both oil holes were plugged by plasma spray. Pictures were taken and the machinist removed old plasma on a milling machine. After the plasma was milled away, rubber plugs were found in holes from previous plasma repair.



Bearing cavity with rubber plug left after previous repair

Teledyne Continental, LTSIO-360-EB
Connecting Rod Bolt Discrepancy

SDR #: 20170821016

Subject:

After installation of the first cylinder, the technician noticed that the connecting rod bolts were contacting the crankcase when the engine was rotated on the nose stand. The new bolts were

compared to the old bolts and a very definite difference was discovered between them at the chamfer on the head of the bolt. The manufacturer is being contacted.

Transport Canada Comments:

Continental Motors has released Service Bulletin SB17-06 that deals with this issue. It can be found at the following URL:

<http://www.continentalmotors.aero/support/service-bulletins.aspx>



On the top is a new 655959 bolt from stock. The chamfer isn't cut enough to clear the crankcase.

On the bottom is the bolt that was removed from the engine.

Hangar Noise

Bombardier, CL-600-2D24

Nose Landing Gear Damaged on Push-Back

SDR #: 20170505007

Subject:

During the aircraft push-back from the gate the tow bar shear pin sheared and the aircraft moved approximately 1 to 2 feet from its original position. The flight crew later reported the aircraft brakes were not released prior to initiating the push-back. Following the shear pin event, the tow bar was examined,

the axle interface pins were bent and the tow bar head "yoke" was bent. Due to the over load caused by this event, the nose landing gear assembly and drag brace were replaced. The right nose wheel assembly was also replaced due to the damaged rim caused by the tow bar.

Transport Canada Comments:

This report serves as a reminder that these types of incidents can and do occur, even to highly trained and professional personnel.

It is easy to fall into the trap of examining only the events immediately leading to such an incident. Asking whether or not there was communication between the flight deck and ground crew prior to the aircraft being pushed back is natural and important, but there is also a lot of value in examining the organizational and human factors that likely contributed. Were there time pressures? Was fatigue a factor? Was this a routine push-back, or was something different? Etc.

A properly implemented Safety Management System (SMS) can help an organization learn from and avoid such incidents by helping them identify organizational and human factors during the investigation process. An SMS can also help identify hazards that are inherent, but not always obvious, in day to day operations. With that type of knowledge organizations can build policies and procedures to defend against these types of incidents and work to strengthen their own internal safety culture.

Equipment Airworthiness Directives (ADs)

Transport Canada (TC) endeavours to send copies of new Airworthiness Directives (ADs), which are applicable in Canada to the registered owners of the affected products. Equipment/appliance ADs are often only distributed to our regional offices because the owners of aircraft affected by this type of AD are not generally known.

Aircraft Maintenance Engineers (AMEs) and operators of the affected products are encouraged to obtain further information or a copy of the ADs from their regional TC office, their local Transport Canada Centre (TCC), their Principal Maintenance Inspector (PMI), or from the Civil Aviation AD website at: www.tc.gc.ca/cawis-swimn

Manufacturer	AD Number	Origin	Description
AEROSPACE WELDING	2018-02-04	US	ATA 78 - EXHAUST NOISE SUPPRESSOR - CRACKS OR BROKEN WELDS IN THE CONNECTING WELD OF THE MUFFLER BODY TO MUFFLER CUFF
CROYDON	DCA-DH60-111B	NZ	ATA - 57 - WING/AILERON SPARS - INSPECTION
CROYDON	DCA-DH82-129B	NZ	ATA - 57 - WING/AILERON SPARS - INSPECTION
CROYDON	DCA-DH83-105B	NZ	ATA - 57 - WING/AILERON SPARS - INSPECTION
CROYDON	DCA-GEN-36A	NZ	ATA 05 - TIME LIMITS/MAINTENANCE CHECKS - INSPECTION TO ENSURE AIRCRAFT PARTS HAVE BEEN CERTIFIED TO CONFORM TO THE APPROVED TYPE DESIGN IN ACCORDANCE WITH THE CIVIL AVIATION RULES,
HTC	2018-02-07	US	ATA 62 - MAIN ROTOR - CRACK IN AN M/R BLADE
ROSEMOUNT	2018-03-04	US	ATA 34 - NAVIGATION - INSPECTION / REPLACEMENT OF PITOT TUBES
ZODIAC	2016-0167	EU	ATA 25 – EQUIPMENT / FURNISHINGS – REAR CABIN ATTENDANT SEAT – INSPECTION / REPAIR

FAA Special Airworthiness Information Bulletins (SAIB)

A Federal Aviation Administration (FAA) SAIB is an information tool that alerts, educates, and makes recommendations to the general aviation community. It is non-regulatory information and guidance that does not meet the criteria for an Airworthiness Directive (AD). www.faa.gov/aircraft/safety/alerts/SAIB/

SAIB Number	Make/Company	Subject	Issue Date
SW-18-15	ROTORCRAFT	EXTERNAL LOAD DEVICES FOR HUMAN EXTERNAL CARGO	2018-05-30
CE-18-14	HELIO AIRCRAFT LLC	MAIN LANDING GEAR: IMPROVED INSPECTION AT DRAG BRACE LOCATION	2018-05-09
SW-18-13	AGUSTA S.P.A.	MAIN TRANSMISSION PLATE FITTING	2018-04-30
SW-18-12	CENTURY FLIGHT SYSTEMS INC.	NAVIGATION – INTEGRATED FLIGHT SYSTEM	2018-03-27
SW-17-23R1	AIRBUS HELICOPTERS	FUEL SYSTEM	2018-03-02

EASA Safety Information Bulletin (SIB)

A European Aviation Safety Agency (EASA) SIB is an information tool that alerts, educates, and makes recommendations to the general aviation community. It is non-regulatory information and guidance that does not meet the criteria for an Airworthiness Directive (AD). <http://ad.easa.europa.eu/sib-docs/page-1>

SIB Number	Subject	Issue Date
2018-09	NON RECOGNITION OF AEROPLANES BY ADVANCED VISUAL DOCKING SYSTEMS AT AERODROMES	2018-05-16
2018-08	IN-FLIGHT FUEL MANAGEMENT — PHRASEOLOGY FOR FUEL-RELATED MESSAGES BETWEEN PILOTS AND AIR TRAFFIC CONTROL	2018-05-08
2018-07	BLOOD ALCOHOL CONCENTRATION LIMITS FOR GENERAL AVIATION PILOTS	2018-04-12

FAA Unapproved Parts Notifications (UPNs)

Unapproved Parts Notifications are published by: FAA, AIR-140, P.O. Box 26460, Oklahoma City, OK 73125. They are posted on the Internet at: <http://www.faa.gov/aircraft/safety/programs/sups/upn/>

Number	Subject	Date Posted
2018-2017-0001120	PARTS DISTRIBUTED BY GENESIS AVIATION INC.: CLAMP LOOP, CUSHION - P/N TA025030-06; FILTER ELEMENT - P/N 26570; BASE PLATE - P/N 232012; BUSHING - P/N S700B0455-6C011. (UPN RESCISSION)	2018/2/15 (RESCINDED 2018/3/9)

Service Difficulty Reports (SDR)

Service Difficulty Reports are submitted by Aircraft Maintenance Engineers (AMEs), owners, operators and other sources to report problems, defects or occurrences that affect aircraft airworthiness in Canada.

Make/Model	Part Name	Part Number	Part Condition	SDR No.
AIRCRAFT				
AERO COMMANDER				
690A	FRAME	31002443	CRACKED	20180327003
AEROSPATIALE				
ATR 42 300	BEAM	S5701407900300	CORRODED	20180217001
ATR 42 300	MAIN WHEEL TIE BOLT	MS2125006038	SHEARED	20180103006
ATR 42 300	CRANK SUPPORT	S53371207200	CRACKED	20180314004
ATR 42 300	FRAME 41	S5367241020202	CRACKED	20180214017
ATR 42 300	SPLICE ANGLE	S53573201211	CRACKED	20180313001
ATR 42 300	WING		CORROSION	20180227009
ATR 42 300	FEATHERING PUMP	4122006009	USED	20180319010
ATR 42 320	FLAP FAIRING	S57910031004	VERTICAL CRACK	20180319009
ATR 42 500	INVERTER	559012D	USED	20180226011
ATR 42 500	CURRENT LIMITER	NSA93113012	CRACKED	20180314011
ATR 42 500	TRIM ACTUATOR	82363	USED	20180107001
ATR 42 500	ELECTRONIC HORIZONTAL SITUATION INDICATOR	100604045002	INTERMITTENT	20180131012
ATR 42 500	PROPELLER BLADE	R8155056	FAILED	20180120001

Make/Model	Part Name	Part Number	Part Condition	SDR No.
ATR 72 202	BATTERY	9750W0538	LOW CAPACITY ON	20180329013
ATR 72 202	HARNESS	E0052R24B61SNECO	CHAFED	20180209007
ATR 72 212A	AIR CYCLE MACHINE		NOT REPORTED	20180130010
ATR 72 600	ALTERNATING CURRENT INVERTER		NOT REPORTED	20180205007
AEROSPATIALE HC				
AS 350B3	BOLT SCREW	22201BC060024L	BROKEN	20180305007
AS 350B3	HALF LAMINATED BEARING	704A33633261	CRACKED	20180104004
AS 350B3	MAIN ROTOR SERVO CONTROL	SC8042	REPAIRED	20180119012
AS 350BA	STARTER/GENERATOR	150SG122Q	IN SERVICE	20180212018
AGUSTA				
AW119 MK II	FORWARD CROSS TUBE	M03101S007041	CRACKED	20180111007
AW139	LEFT-HAND WINDSHIELD	4G561V00131	CRACKED	20180327014
AIR TRACTOR				
AT 502B	PLATE SPRING ATTACHMENT	106111	CRACKED WELD	20180308011
AT 502B	PLATE SPRING ATTACHMENT	106111	CRACKED WELD	20180308012
AT 802	BEARING	MS141044	WORN BEYOND LIMITS	20180108009
AT 802A	CONTACT BEARING CUP & CONE ASSEMBLY	10A0600003610A06	NOT REPORTED	20180124008
AT 802A	CONTACT BEARING CUP & CONE ASSEMBLY	10A0600003610A06	NOT REPORTED	20180124009
AT 802A	CONTACT BEARING CUP & CONE ASSEMBLY	10A06000036AND10	NOT REPORTED	20180124007
AT 802A	HYDRAULIC POWER PACK ASSEMBLY	10A12000079	UNSERVICEABLE	20180329007
AT 802A	STARTER GENERATOR		NOT REPORTED	20180116005
AIRBUS				
A310 304	TELESCOPIC STRUT	C231098102	NOT REPORTED	20180212022
A310 304	TELESCOPIC STRUT	C231098103	NOT REPORTED	20180212026
A310 304	AIR TUBE	1335M66G04	BROKEN	20180116012
A310 308	TELESCOPIC STRUT	C23109111	NOT REPORTED	20180212021
A310 308	TELESCOPIC STRUT	C231096104	NOT REPORTED	20180212020
A310 308	TELESCOPIC STRUT	C231098102	NOT REPORTED	20180212025
A310 308	TELESCOPIC STRUT	C231098104	NOT REPORTED	20180212023
A310 308	TELESCOPIC STRUT	C231098104	NOT REPORTED	20180212024

Make/Model	Part Name	Part Number	Part Condition	SDR No.
A319 112	AIR CONDITIONING		NOT REPORTED	20180227007
A319 112	BLOWER, EXTRACTION COOLING FAN	EVT3454HC	FAILED	20180314007
A319 112	BLEED PRESSURE REGULATOR VALVE	6774E010000	FAILED	20180108003
A319 114	SKIN AIR OUTLET VALVE	VFT300A1	FAILED	20180226013
A319 114	TRANSFORMER RECTIFIER UNIT	Y0052	FAILED	20180129003
A319 114	HYDRAULIC POWER SYSTEM		NOT REPORTED	20180226018
A319 114	HYDRAULIC SYSTEM		NOT REPORTED	20180122009
A319 114	HYDRAULIC SYSTEM		NOT REPORTED	20180205009
A319 114	SWITCH	HTE6900351	FAILED	20180117001
A319 114	WHEEL ASSEMBLY	32200011	BLOWN	20180102002
A320 211	OUTFLOW VALVE	90231570381	FAILED	20180122008
A320 211	FLIGHT MANAGEMENT GUIDANCE COMPUTER	B398BAM0209	FAILED	20180219003
A320 211	SMOKE DETECTOR UNIT	RAI2800M0706	FAILED	20180307002
A320 211	OUTBOARD FLAP INBOARD ACTUATOR	793A000007	FAILED	20180219004
A320 211	SLAT ROTARY ACTUATOR	830A000004	FAILED	20180222010
A320 211	O-RING	NSA8203222	LEAKING	20180322009
A320 211	NOSE LANDING GEAR UPLOCK	C247300016	FAILED	20180115011
A320 211	TUBE	3364105020	BROKEN	20180313009
A320 211	HYDRO MECHANICAL FUEL CONTROL UNIT	8061526	LEAKING	20180123011
A320 211	VARIABLE BLEED VALVE GEAR MOTOR	39680012	FAILED	20180206007
A320 214	BRAKE STEERING CONTROL UNIT	E21327107	FAILED	20180214007
A320 214	AIR DATA INERTIA REFERENCE UNIT	HG2030AE23	FAILED	20180308001
A321 211	PIPE	D2901005202000	LEAKING	20180117002
A321 211	HYDRAULIC PUMP	3031863001	FAILED	20180116004
A321 211	CARBON BRAKE	C20534100	SHEARED	20180327012
A321 211	AIR DATA MODULE	PG1152BC02	FAILED	20180205012
A321 211	AUXILIARY POWER UNIT		NOT REPORTED	20180222008
A330 342	BRAKE ASSEMBLY	215452	NOT REPORTED	20180326019
A330 343	CHECK VALVE	CAR400	LEAKING	20180307003
A330 343	RING	NAS161224	LEAKING	20180314008

Make/Model	Part Name	Part Number	Part Condition	SDR No.
A330 343	ENGINE DRIVEN PUMP	974976	FAILED	20180326012
A330 343	LANDING GEAR CONTROL AND INTERFACE UNIT	005LG005B	FAILED	20180129002
BAE - RAYTHEON				
HAWKER 850XP	BOLT CONNECT LINK	258UM421	FAILED	20180315010
BEECH				
1900D	ANGLE	1294200343	CRACKED	20180222006
1900D	BRACKET ASSEMBLY	1148200771	NEW	20180307005
1900D	BULB	951F04	BURNT	20180306006
1900D	ENGINE	PT6A67D	OVERHAUL	20180220006
1900D	FRAME	12944003477	CRACKED	20180115026
1900D	GROUND LUG		CORRODED	20180313008
1900D	HOSE ASSEMBLY	131823VH6	NEW	20180306005
1900D	LANDING SELECTOR SWITCH	1013841377	FAILED	20180116010
1900D	LINE FUEL	3035618	NEW	20180119007
1900D	MOTOR	571302	INSTALLED	20180319016
1900D	NOSE LANDING GEAR	114820021651	OVERHAUL	20180222015
1900D	RETAINER OIL SEAL CARRIER	3007737	REMOVED	20180321008
1900D	SWITCH	602EN16	CHAFED	20180123009
1900D	SWITCH GEAR DOWN LOCK	1143610441	NEW	20180205015
1900D	SWITCH-UPLOCK & DOWNLOCK	1CH25	HIGH RESISTANCE	20180122007
1900D	SWITCH/BREAKER	7270515S17	FAILED	20180114001
1900D	WIRING		CHAFED	20180206005
1900D	GOVERNOR PROPELLER	8210410	OVERHAUL	20180302012
76	MAIN LANDING GEAR A-FRAME ASSEMBLY	10581002375	CRACKED	20180305018
A100	BOLT	817841446	CRACKED	20180319007
B100	FUEL CONTROL UNIT	8977709	NOT REPORTED	20180131003
B100	PLATE CAM ADJUSTING	1158100363	CRACKED	20180228005
B200	ELECTRIC MOTOR	571302	BURNT	20180215008
B200	LEFT-HAND WINDSCREEN	10138402523	CRACKED	20180312012
B200	SOLENOID VALVE	717	FAILED	20180207023

Make/Model	Part Name	Part Number	Part Condition	SDR No.
B200C	BRACKET	10151406923	NEW	20180321013
B200GT	DOWNLOCK SWITCH	10136468281	LOOSE	20180216007
B300C	BASE ASSEMBLY	1015140651	CRACKED	20180315005
B300C	BYPASS DUCT		NOT REPORTED	20180328008
C90A	DOUBLER		CORRODED	20180116008
C90A	MAIN LANDING GEAR	5081028621	BROKEN	20180105002
C90A	VERIFICATION CHECK FOR INTERSTAGE TURBINE TEMPERATURE		NOT REPORTED	20180320004
E90	FLAP TRACK BRACKET	501600183	CRACKED	20180117004
F90	LANDING GEAR CONTROL	A4503M95	NO VISUAL DAMAGE	20180220009
BELL TEXTRON - CAN				
206B	STARTER/GENERATOR	23032027	FRESHLY OVERHAULED	20180129016
206B	HYDRAULIC PUMP	206076022101	UNSERVICEABLE	20180326022
206B	TRANSMISSION MAIN CASE	206040002025	LOOSE	20180111003
206B	AFT TAIL ROTOR DRIVESHAFT SEGMENT	206040931101	EXCESSIVE PLAY	20180117008
206B	HYDRAULIC SERVO	206076031023	LOOSE	20180104018
206B	ANTI-ICE VALVE ASSEMBLY	206062625003	FAILED	20180219012
206L 1	DIODE	301265AA	FAILED	20180201006
206L 3	THROTTLE CABLE	7449102	KINKED	20180323008
206L 4	SHAFT	5D4407	DAMAGED	20180307006
407	COVER ASSEMBLY	407030822	DEPARTED	20180115027
407	DOUBLE CHAMFERED PYLON WASHER	14000725S22E6	CRACKED	20180323010
407	TAIL ROTOR CENTRAL ASSEMBLY HOUSING	206011721113	FRETTING	20180214006
429	CONDENSER BLOWER ASSEMBLY	S6063EC1	CRACKED	20180123030
429	FAN BLADES		DETACHED	20180131002
429	CHARGING PORT	64309022	INOPERABLE	20180316008
429	BATTERY	763844	UNSERVICEABLE	20180130016
429	FAN ASSEMBLY	200SGL11075	RUBBING	20180228009
429	LOGIC MODULE	LM1210TMPDSS	OPEN	20180316006
429	ACTUATOR	429336302101	FAULTY	20180323009

Make/Model	Part Name	Part Number	Part Condition	SDR No.
429	AIR DATA/ATTITUDE/HEADING REFERENCE SYSTEM	KSG7200429075123	OFFSET	20180123013
429	AIR DATA/ATTITUDE/HEADING REFERENCE SYSTEM	KSG7200429075123	OFFSET	20180123015
429	AIR DATA/ATTITUDE/HEADING REFERENCE SYSTEM	KSG7200429075123	OFFSET	20180123016
429	AIR DATA/ATTITUDE/HEADING REFERENCE SYSTEM	KSG7200429075123	OFFSET	20180123017
429	AIR DATA/ATTITUDE/HEADING REFERENCE SYSTEM	KSG7200429075123	OFFSET	20180123018
429	AIR DATA/ATTITUDE/HEADING REFERENCE SYSTEM	KSG7200429075123	OFFSET	20180123019
429	AIR DATA/ATTITUDE/HEADING REFERENCE SYSTEM	KSG7200429075123	OFFSET	20180123020
429	AIR DATA/ATTITUDE/HEADING REFERENCE SYSTEM	KSG7200429075123	OFFSET	20180123021
429	AIR DATA/ATTITUDE/HEADING REFERENCE SYSTEM	KSG7200429075123	OFFSET	20180123022
429	AIR DATA/ATTITUDE/HEADING REFERENCE SYSTEM	KSG7200429075123	OFFSET	20180123023
429	AIR DATA/ATTITUDE/HEADING REFERENCE SYSTEM	KSG7200429075123	OFFSET	20180123024
429	AIR DATA/ATTITUDE/HEADING REFERENCE SYSTEM	KSG7200429075123	OFFSET	20180123025
429	AIR DATA/ATTITUDE/HEADING REFERENCE SYSTEM	KSG7200429075123	OFFSET	20180123026
429	AIR DATA/ATTITUDE/HEADING REFERENCE SYSTEM	KSG7200429075123	OFFSET	20180123027
429	AIR DATA/ATTITUDE/HEADING REFERENCE SYSTEM	SG72004290751231	OFFSET	20180123014
429	AIR DATA/ATTITUDE/HEADING REFERENCE SYSTEM	KSG7200429075123	FAULTY	20180123032
429	AIR DATA/ATTITUDE/HEADING REFERENCE SYSTEM	KSG7200429075123	FAULTY	20180123033
429	AIR DATA/ATTITUDE/HEADING REFERENCE SYSTEM	KSG7200429075123	FAULTY	20180123034
429	AIR DATA/ATTITUDE/HEADING REFERENCE SYSTEM	KSG7200429075123	FAULTY	20180123035
429	AIR DATA/ATTITUDE/HEADING REFERENCE SYSTEM	KSG7200429075123	FAULTY	20180123036
429	AIR DATA/ATTITUDE/HEADING REFERENCE SYSTEM	KSG7200429075123	FAULTY	20180123037
429	TAIL ROTOR PITCH CONTROL LINK	429012112101FM	WORN	20180104015
505	PITCH CHANGE MECHANISM HOUSING	206011721009	FRETTING	20180122015
505	MAGNETIC SEAL	1330	SEPARATED	20180201004
505	DUCT	SLS063001001	CRACKED	20180108011
505	DUCT	SLS063001003	CRACKED	20180115025
505	DUCT	SLS063001003	CRACKED	20180115028
505	DUCT	SLS063001003	CRACKED	20180115029
BELL TEXTRON - USA				
205A 1	BEARING	H33C32	UNSERVICEABLE	20180214016

Make/Model	Part Name	Part Number	Part Condition	SDR No.
412	LAMP WIRE		DAMAGED	20180308006
412EP	AUTOMATIC FLIGHT CONTROL SYSTEM	SPZ7600412XXXXXX	NOT REPORTED	20180207013
412EP	AUTOMATIC FLIGHT CONTROL SYSTEM	SPZ7600412XXXXXX	FAULTY	20180207011
412EP	AUTOMATIC FLIGHT CONTROL SYSTEM	SPZ7600412XXXXXX	FAULTY	20180207014
412EP	AUTOMATIC FLIGHT CONTROL SYSTEM	SPZ7600412XXXXXX	FAULTY	20180207015
412EP	AUTOMATIC FLIGHT CONTROL SYSTEM	SPZ7600412XXXXXX	FAULTY	20180207017
412EP	AUTOMATIC FLIGHT CONTROL SYSTEM	SPZ7600412XXXXXX	FAULTY	20180207018
412EP	AUTOMATIC FLIGHT CONTROL SYSTEM	SPZ7600412XXXXXX	FAULTY	20180207019
412EP	AUTOMATIC FLIGHT CONTROL SYSTEM	SPZ7600412XXXXXX	FAULTY	20180207020
412EP	RIGHT-HAND BRACE	205030831015	MISALIGNMENT	20180223015
412EP	COUPLING/INNER AFT	214040657003	PITTED	20180126001
BOEING				
737 2R8C	FLAP POSITION INDICATOR	2061141	DEFECTIVE	20180221005
737 406	FRAME	654653172	CRACKED	20180122016
737 406	SEAT TRACK	7022033	CRACKED	20180122019
737 406	SKIN	6978025	CORRODED	20180131001
737 406	HOSE	1090032	PIN HOLE	20180110008
737 406	TUBE	1090032	LEAKING	20180313021
737 406	ENGINE CABLE	697849137	UNSERVICEABLE	20180131011
737 436	THRUST REVERSE	315A1701112A	DELAMINATED	20180117006
737 4Q8	BRAKE ASSEMBLY	26066724	NOT REPORTED	20180102008
737 55D	ENGINE FUEL SHUT-OFF VALVE ASSEMBLY	61163	NOT REPORTED	20180215016
737 73V	LEAD IGNITION	90591101	NOT REPORTED	20180216001
737 76N	#2 WINDOW PANE	58935588	CRACKED	20180119013
737 7CT	STABILIZER NOSE DOWN LIMIT	32EN144	UNSERVICEABLE	20180214014
737 7CT	#1 CAPTAIN WINDOW	5893543149	CRACKED	20180316012
737 7CT	#1 RIGHT-HAND WINDSHIELD	5893543150	SHATTERED	20180213010
737 7CT	FIRST OFFICERS #2 WINDOW PANE	5895588	CRACKED	20180316013
737 8CT	L2 DOOR GUIDE ARM	65528547	NOT REPORTED	20180312011
757 2B7	RUDDER POWER CONTROL ACTUATOR	332152010	UNSERVICEABLE	20180319011

Make/Model	Part Name	Part Number	Part Condition	SDR No.
767 316	OUTFLOW VALVE		NOT REPORTED	20180102001
767 316	HYDRAULIC QUANTITY MONITOR	367027020	FAILED	20180105001
767 328	CAP-FILTER	252T13071	NOT REPORTED	20180308010
767 333	RUDDER CONTROL		NOT REPORTED	20180219002
767 338	DOOR		NOT REPORTED	20180206009
767 338	WINDOW		NOT REPORTED	20180223013
767 33A	PROXIMITY SENSOR	834503	NOT REPORTED	20180313020
767 375	SLAT CONTROL		NOT REPORTED	20180301001
767 38E	SIDE BRAKE LOCK ACTUATOR	273T62013	FAILED	20180108005
767 38E	HIGH PRESSURE SHUT OFF VALVE	80217010	FAILED	20180108004
777 233LR	SMOKE DETECTOR	21198356	FAILED	20180227005
777 333ER	BULK CARGO VENT FAN	6067071	FAILED	20180327004
777 333ER	AUDIO MANAGEMENT UNIT	5700111	FAILED	20180201003
777 333ER	HYDRAULIC POWER SYSTEM		NOT REPORTED	20180306003
777 333ER	ICE/RAIN PROTECTION		NOT REPORTED	20180110002
777 333ER	RADOME	284T005239	DELAMINATED	20180117005
787 8	AIR CONDITIONING		NOT REPORTED	20180226032
787 8	CONTACTOR ASSEMBLY	727CA02Y01	BURNT	20180305006
787 8	BACK UP RIB	152Z633153	CRACKED	20180221003
787 8	BACK UP RIB	152Z633153	CRACKED	20180221014
787 8	BACK UP RIB	152Z633154	CRACKED	20180221013
787 8	BACK UP RIB	152Z633154	CRACKED	20180221015
787 8	BACK-UP RIB	152Z6331	NOT REPORTED	20180122010
787 8	FLAP SUPPORT BACK UP RIB	152Z6331	NOT REPORTED	20180222017
787 8	FLAP SUPPORT BACK UP RIB	152Z633155	NOT REPORTED	20180215007
787 9	HARNESS W801027	668Z801027223	ARCING	20180130012
787 9	TERMINAL BLOCK FEED THROUGH	46582384	BURNT	20180322007
BOMBARDIER				
BD 100 1A10	AUXILIARY POWER UNIT AND DE-ICE FLUID		SMOKE FAULT	20180314006
BD 100 1A10	WATER PALLET	AR901711	SPARKING	20180320001

Make/Model	Part Name	Part Number	Part Condition	SDR No.
BD 100 1A10	BRAKE		FROZEN	20180205014
BD 500 1A10	AIR CONDITIONING		NOT REPORTED	20180328002
BD 500 1A10	FLIGHT MANAGEMENT SYSTEM	81003112B0003	UNCOMMANDED	20180215006
BD 500 1A10	FLIGHT MANAGEMENT SYSTEM	81003112B0003	NOT REPORTED	20180201002
BD 500 1A10	AUTO THROTTLE	81003112B0003	NOT REPORTED	20180329001
BD 500 1A10	BLOW-OUT PANEL	D762209503	FALLS OUT	20180209013
BD 500 1A10	EMERGENCY LOCATER TRANSMITTER	510901701	NOT REPORTED	20180125004
BD 500 1A10	ESCAPE SLIDE	CS1519630105	INCORRECT INSTALLATION	20180321009
BD 500 1A10	SLIDE PASSENGER	C01519630105	INCORRECT INSTALLATION	20180321007
BD 500 1A10	PRIMARY FLIGHT CONTROL UNIT	8100337002003000	NOT REPORTED	20180115016
BD 500 1A10	CENTER FUEL TANK RIGHT-HAND RIB 3		NOT REPORTED	20180126002
BD 500 1A10	TANK BLOCAGE CONTAMINATION		NOT REPORTED	20180212029
BD 500 1A10	CHECK VALVE ASSEMBLY	2090199101	FAILED	20180122006
BD 500 1A10	NOSE LANDING GEAR SHOCK STRUT ASSEMBLY	4124A000003	DEPLETED	20180207016
BD 500 1A10	NOSE LANDING GEAR SHOCK STRUT ASSEMBLY	4124A000003	LEAKING	20180207010
BD 500 1A10	NOSE LANDING GEAR SHOCK STRUT EQUIP	4123A000003	LEAKING	20180208005
BD 500 1A10	ELECTRICAL BRACKET	C02318520005	NOT REPORTED	20180109002
BD 500 1A10	FLIGHT MANAGEMENT SYSTEM	81003112B0003	WRONG INDICATION	20180312002
BD 500 1A10	PRESSURE SEAL	C01549501109	DAMAGED	20180223003
BD 500 1A10	BLEED VALVE	6155B010001	UNDER TORQUE	20180309008
BD 500 1A11	AUTO-FLIGHT SYSTEM	81003112B0303	NOT REPORTED	20180201001
BD 500 1A11	FLIGHT MANAGEMENT SYSTEM	81003112B0302	FAILED	20180101004
BD 500 1A11	FLIGHT CONTROL PANEL	8222468010	FAILED	20180226019
BD 500 1A11	AUTO THROTTLE		NOT REPORTED	20180321010
BD 500 1A11	FLIGHT MANAGEMENT SYSTEM	81003112B0303	FAILED	20180103002
BD 500 1A11	GENERATOR	C07500043003	OIL MESSAGE	20180226017
BD 500 1A11	GENERATOR CONTROL UNIT	C07500041003	FAILED	20180313015
BD 500 1A11	OVERVOLTAGE PROTECTION UNIT	1717820C	FAILED	20180108001
BD 500 1A11	OVERVOLTAGE PROTECTION UNIT	1717820C	FAILED	20180315001

Make/Model	Part Name	Part Number	Part Condition	SDR No.
BD 500 1A11	VARIABLE FREQUENCY GENERATOR HARNESS	999W5702501	INTERMITTENT	20180319003
BD 500 1A11	VARIABLE FREQUENCY GENERATOR #2 HARNESS	CPYTG2039	CHAFED WIRE	20180104002
BD 500 1A11	VARIABLE FREQUENCY GENERATOR	C07500043003	FAILED	20180226010
BD 500 1A11	GENERATOR CONTROL UNIT	1714668J	FAILED	20180221002
BD 500 1A11	CHILLER SYSTEM ASSEMBLY	6151	VIBRATIONS	20180322008
BD 500 1A11	BLOW-OUT PANEL	D762209503	FALLS OUT	20180209015
BD 500 1A11	BLOW-OUT PANEL	D762209503	FALLS OUT	20180209020
BD 500 1A11	EMERGENCY EXIT SLIDE	68332101	FAILED TO INFLATE	20180202005
BD 500 1A11	EMERGENCY EXIT SLIDE	68332102	NOT REPORTED	20180202004
BD 500 1A11	SLIDE	68331101	FAILED	20180319005
BD 500 1A11	WING SLIDE ASSEMBLY	68332101	FAILED	20180103001
BD 500 1A11	WING SLIDE ASSEMBLY	68332101	FAILED	20180104003
BD 500 1A11	LINEAR VARIABLE DIFFERENTIAL TRANSFORMER		DESIGN ISSUE	20180328007
BD 500 1A11	ELEVATOR - RIGHT-HAND	C05500026003	LOSS OF CONTROL	20180117003
BD 500 1A11	FUEL TUBE ASSEMBLY	C01633386005	BROKEN	20180329004
BD 500 1A11	MAIN LANDING GEAR ASSEMBLY	5965B000001	LEAKING	20180320002
BD 500 1A11	NOSE LANDING GEAR SHOCK STRUT ASSEMBLY	4124A000004	DEPLETED	20180213001
BD 500 1A11	NOSE LANDING GEAR SHOCK STRUT ASSEMBLY	4124A000004	DEFLATED	20180219005
BD 500 1A11	BOTH DISPLAY UNIT	8222276410	INTERMITTENT FAILURE	20180125007
BD 500 1A11	WINDSHEAR COMPUTER	8222259001	WARNING MESSAGE	20180316004
BD 500 1A11	AIR TRAFFIC CONTROL TRANSPONDER #2	6229210501	FAILED	20180221004
BD 500 1A11	TRANSPONDER	6229210501	FAILED	20180223007
BD 500 1A11	SOFTWARE		NOT REPORTED	20180326011
BD 500 1A11	AUXILIARY POWER UNIT OIL		SMOKE IN CABIN	20180221016
BD 500 1A11	FORWARD PASSENGER DOOR	C01518140001	FAILED TO OPEN	20180215005
BD 500 1A11	FORWARD PASSENGER DOOR	C01518140001	FROZEN	20180129004
BD 500 1A11	FORWARD PASSENGER DOOR	C01518140001	FROZEN	20180129005
BD 500 1A11	FORWARD PASSENGER DOOR	C01518140001	FROZEN	20180129006
BD 500 1A11	FORWARD PASSENGER DOOR	C01518140001	FROZEN	20180129007
BD 500 1A11	FORWARD PASSENGER DOOR	C01518140001	FROZEN	20180130011

Make/Model	Part Name	Part Number	Part Condition	SDR No.
BD 500 1A11	FORWARD PASSENGER DOOR	C01518140001	FROZEN	20180202001
BD 500 1A11	FORWARD PASSENGER DOOR	C01518140001	FROZEN	20180202002
BD 500 1A11	FORWARD PASSENGER DOOR	C01518140001	FROZEN	20180115012
BD 500 1A11	FORWARD PASSENGER DOOR	C01518140001	FROZEN	20180206002
BD 500 1A11	PASSENGER DOOR ASSEMBLY	C01518140001	FAILED TO OPEN	20180101001
BD 500 1A11	PASSENGER DOOR ASSEMBLY	C01518140001	FROZEN	20180101003
BD 500 1A11	PASSENGER DOOR ASSEMBLY	C01518140001	UNABLE TO OPEN	20180110001
BD 500 1A11	PASSENGER DOOR ASSEMBLY	C01538340001	FROZEN	20180101002
BD 700 1A10	FLOW CONTROL VALVE		FAULTY	20180319015
BD 700 1A10	AUTO-THROTTLE		INTERMITTENT	20180104008
BD 700 1A10	AVIONICS BATTERY	GL51122015	FAILED	20180213003
BD 700 1A10	WIRE	2LA45602500	PINCHED	20180323019
BD 700 1A10	GREASE INSERT	MS150042	CRACKED	20180223009
BD 700 1A10	TRAILING ARM	21410107	CORRODED	20180209019
BD 700 1A11	BATTERY CHARGER	GL51124019	DAMAGED	20180123007
BD 700 1A11	HYDRAULIC LINE	GD478110211	LEAKING	20180302017
CL600 2B19 (RJ100)	ELBOW		DETACHED	20180307004
CL600 2B19 (RJ100)	AIR DRIVEN GENERATOR	604908203	DEPLOYED	20180209018
CL600 2B19 (RJ100)	INTEGRATED DRIVE GENERATOR	720845E	NO RESET	20180205013
CL600 2B19 (RJ100)	ALTERNATING CURRENT SYSTEM		NOT REPORTED	20180208011
CL600 2B19 (RJ100)	FAN	AE0607D00	SEIZED	20180125002
CL600 2B19 (RJ100)	FLEX SHAFT	1104SD100301	HIGH TORQUE LOAD	20180222007
CL600 2B19 (RJ100)	FUEL QUANTITY INDICATING SYSTEM	73664310	FAILED	20180119008
CL600 2B19 (RJ100)	PRESSURE SWITCH	211C223461A	NOT REPORTED	20180110004
CL600 2B19 (RJ100)	LANDING GEAR		NOT REPORTED	20180110005
CL600 2B19 (RJ100)	LIGHT ASSEMBLY	BC10082003	HEAT DAMAGE	20180103004
CL600 2B19 (RJ100)	BALLAST	BR95005	ODOR	20180221010
CL600 2B19 (RJ100)	ANGLE OF ATTACK SENSOR	C16258AC	FAILED	20180207004
CL600 2B19 (RJ100)	CLAMP V-BAND	NM1026190200	LEAKING	20180212016
CL600 2B19 (RJ100)	DOOR SUPPORT ASSEMBLY	601R317091	CRACKED	20180205019

Make/Model	Part Name	Part Number	Part Condition	SDR No.
CL600 2B19 (RJ100)	HANDLE ASSEMBLY	H341935	CORRODED	20180130022
CL600 2B19 (RJ100)	WINDSHIELD	NP139321	CRACKED	20180104016
CL600 2B19 (RJ100)	WING LEADING EDGE	601R120444S	DENTED	20180312008
CL600 2B19 (RJ440)	AIR FILTER	31797461	CLOGGED	20180322010
CL600 2B19 (RJ440)	OUTFLOW VALVE	1037729	FAULTY	20180213008
CL600 2B19 (RJ440)	AIR CYCLE MACHINE	78279015	FAILED	20180207007
CL600 2B19 (RJ440)	PRESSURE REGULATOR AND SHUT-OFF VALVE	32156221	FAILED	20180207005
CL600 2B19 (RJ440)	VOLTAGE/FREQUENCY SENSOR	VS403	FAULTY	20180207006
CL600 2B19 (RJ440)	HEAT SENSING ELEMENT	355924400	FAULTY	20180209001
CL600 2B19 (RJ440)	HEAT SENSING ELEMENT	356024310	FAULTY	20180112013
CL600 2B19 (RJ440)	SPOILER ELECTRONIC CONTROL UNIT	49164	CONFIGURATION MESSAGE	20180322011
CL600 2B19 (RJ440)	PITCH TRIM SWITCH	3094334	FAILED	20180209017
CL600 2B19 (RJ440)	BRAKE AND POSITION SENSING UNIT	855D100	FAILED	20180109005
CL600 2B19 (RJ440)	BRAKE AND POSITION SENSING UNIT	855D10015	FAILED	20180104007
CL600 2B19 (RJ440)	BRAKE AND POSITION SENSOR UNIT	855D100	FAILED	20180125006
CL600 2B19 (RJ440)	INBOARD FLAP SKEW SENSOR	8004404	FAULTY	20180125005
CL600 2B19 (RJ440)	BRAKE AND POSITION SENSING UNIT	855D10013	FAILED	20180118004
CL600 2B19 (RJ440)	ALTERNATING CURRENT MOTOR DRIVEN PUMP	848847	FAILED	20180209005
CL600 2B19 (RJ440)	ALTERNATING CURRENT MOTOR DRIVEN PUMP	848847	FAILED	20180220008
CL600 2B19 (RJ440)	HEAT SENSING ELEMENT	24403615	FAILED	20180228003
CL600 2B19 (RJ440)	DUCT ASSEMBLY	14436105	CRACKED	20180328012
CL600 2B19 (RJ440)	HEAT SENSING ELEMENT	356202255	FAILED	20180130018
CL600 2B19 (RJ440)	COWL ANTI-ICE VALVE	300013000003	FAIL WARNING	20180125008
CL600 2B19 (RJ440)	COWL ANTI-ICE VALVE	300013000	FAILED	20180329010
CL600 2B19 (RJ440)	COWL ANTI-ICE VALVE	300013000003	FAILED	20180202007
CL600 2B19 (RJ440)	COWL ANTI-ICE VALVE	300013000003	FAILED	20180213005
CL600 2B19 (RJ440)	COWL ANTI-ICE VALVE	300013000003	FAILED IN FLIGHT	20180116009
CL600 2B19 (RJ440)	AIR DATA SENSOR HEATER CONTROL	7858062	FAILED	20180131004
CL600 2B19 (RJ440)	WINDOW HEAT CONTROLLER	16591	CAUTION MESSAGE	20180109004
CL600 2B19 (RJ440)	FAN SENSOR UNIT	601R51577	CAUTION MESSAGE	20180315004

Make/Model	Part Name	Part Number	Part Condition	SDR No.
CL600 2B19 (RJ440)	WHEEL PROXIMITY SENSOR	3008750007	FAULTY	20180307012
CL600 2B19 (RJ440)	AIR CHARGE VALVE	MS288892	DAMAGED	20180104013
CL600 2B19 (RJ440)	PISTON/AXLE ASSEMBLY	16122101	NOT REPORTED	20180220017
CL600 2B19 (RJ440)	MAIN LANDING GEAR SELECTOR VALVE	617501	FAILED	20180213007
CL600 2B19 (RJ440)	NOSE LANDING GEAR SENSORS HARNESS ASSEMBLY	17300221	NOT RETRACTING	20180322012
CL600 2B19 (RJ440)	PRIORITY VALVE	4622	FAILED	20180215010
CL600 2B19 (RJ440)	ANTI-SKID HARNESS	17300600000014	FAULTY	20180214005
CL600 2B19 (RJ440)	BRACKET	16215	DAMAGED	20180209012
CL600 2B19 (RJ440)	BRACKET - PROXIMITY SENSOR	16215	DAMAGED	20180209011
CL600 2B19 (RJ440)	PROXIMITY SENSOR	864202	FAULTY	20180109006
CL600 2B19 (RJ440)	PROXIMITY SENSOR UNIT	864808	ADJUSTED	20180226026
CL600 2B19 (RJ440)	HARNESS ASSEMBLY	17300221	FAULTY	20180212028
CL600 2B19 (RJ440)	NOSE LANDING GEAR SENSOR WOW HARNESS ASSEMBLY	17300221	FAULTY	20180228002
CL600 2B19 (RJ440)	AIR DATA COMPUTER	601R5208391	FAILED	20180226022
CL600 2B19 (RJ440)	AIR DATA REFERENCE PANEL	6229819104	FAILED IN FLIGHT	20180308007
CL600 2B19 (RJ440)	ALTITUDE AND HEADING REFERENCE SYSTEM	6229336400	DATA LOST	20180104010
CL600 2B19 (RJ440)	ALTITUDE AND HEADING REFERENCE SYSTEM COMPUTER	6229339400	FAILED	20180329012
CL600 2B19 (RJ440)	FLUX DETECTOR UNIT	6229812006	FAILED	20180223010
CL600 2B19 (RJ440)	HEAT SENSING ELEMENT	356202255	NOT REPORTED	20180213006
CL600 2B19 (RJ440)	CONNECTOR	M2430824F	INSTRUCTIONS	20180314009
CL600 2B19 (RJ440)	FRAME STRUCTURE	601R32002	CORROSION	20180222014
CL600 2B19 (RJ440)	PROXIMITY SENSOR	840534	FAULTY	20180313013
CL600 2B19 (RJ440)	FRAME	601R3200441	CRACKED	20180205023
CL600 2B19 (RJ440)	FRAME	601R3200455	CORROSION	20180302014
CL600 2B19 (RJ440)	FRAME SECTOR	601R320004	CRACKED	20180326017
CL600 2B19 (RJ440)	INTERCOSTAL	601R31049	CORRODED	20180326014
CL600 2B19 (RJ440)	FLOOR BEAM	601R350313	CORRODED	20180316010
CL600 2B19 (RJ440)	FLOOR BEAM	601R35031	CORROSION	20180305011
CL600 2B19 (RJ440)	FLOOR CROSSBEAM	601R32005151	CORRODED	20180221011

Make/Model	Part Name	Part Number	Part Condition	SDR No.
CL600 2B19 (RJ440)	FLOOR SUPPORT FITTING	601R350311	CORROSION	20180209014
CL600 2B19 (RJ440)	INTERCOSTAL	601R31171	CRACKED	20180326018
CL600 2B19 (RJ440)	FLOOR SILL	601R31148	CORROSION	20180326016
CL600 2B19 (RJ440)	LOWER FUSELAGE SKIN PANEL	601R35005	CORRODED	20180201007
CL600 2B19 (RJ440)	SKIN PANEL	601R31022	CORRODED	20180327001
CL600 2B19 (RJ440)	PYLON RIB	6013700485	CRACKED	20180219006
CL600 2B19 (RJ440)	WINDSHIELD	NP139321	CRACKED	20180110006
CL600 2B19 (RJ440)	WINDSHIELD	NP139321	CRACKED	20180321006
CL600 2B19 (RJ440)	WING UPPER SKIN		CORROSION	20180119009
CL600 2B19 (RJ440)	UPPER AFT WING PLANK	601R100428	CORROSION	20180119010
CL600 2B19 (RJ440)	SPOILER POWER CONTROL UNIT	270007	NOT REPORTED	20180202003
CL600 2B19 (RJ440)	FULL AUTHORITY DIGITAL ENGINE CONTROL	4120T00P	FAILED	20180125011
CL600 2B19 (RJ440)	REVERSER		UNLOCK MESSAGE	20180313014
CL600 2B19 (RJ440)	STOW SWITCH	4EN886	FAILED	20180215009
CL600 2B19 (RJ440)	OIL PRESSURE SWITCH	1153P0012	NOT REPORTED	20180223011
CL600 2C10 (RJ700)	ALTERNATING CURRENT SYSTEM CONTROLLER	GG67095026	NOT REPORTED	20180309011
CL600 2C10 (RJ700)	FLOW CONTROL VALVE	GG670950033	FAULTY	20180109003
CL600 2C10 (RJ700)	LAVATORY		SMOKE	20180212011
CL600 2C10 (RJ700)	LAVATORY		SMOKE	20180309004
CL600 2C10 (RJ700)	YAW DAMPER ACTUATOR	6229968001	FAILED	20180327007
CL600 2C10 (RJ700)	POSITION CONTROL SURFACE SNSOR	3A2237B	SPLIT ELEVATOR	20180221009
CL600 2C10 (RJ700)	PITCH TRIM SWITCH	3094334	INTERMITTENT	20180109001
CL600 2C10 (RJ700)	SLAT ACTUATORS 3	766385C	FAILED IN FLIGHT	20180115018
CL600 2C10 (RJ700)	DATA CONCENTRATOR UNIT	8221310102	NOT REPORTED	20180118009
CL600 2C10 (RJ700)	PRIORITY BALANCED RELIEF VALVE	9752753	NOT REPORTED	20180124005
CL600 2C10 (RJ700)	MAIN LANDING GEAR SELECTOR VALVE	2322H000	FAILED	20180125009
CL600 2C10 (RJ700)	BALANCE RELIEF VALVE	9752753	FAILED	20180222016
CL600 2C10 (RJ700)	ALTITUDE AND HEADING REFERENCE SYSTEM COMPUTER	6229336400	FAILED	20180131005
CL600 2C10 (RJ700)	PNEUMATIC SYSTEM		MISSING BONDING	20180313019
CL600 2C10 (RJ700)	PASSENGER DOOR INNER SKIN	CC670386011SN100	CRACKED	20180124003

Make/Model	Part Name	Part Number	Part Condition	SDR No.
CL600 2C10 (RJ700)	STOP FITTING	6003808733	CRACKED	20180104017
CL600 2C10 (RJ700)	PROXIMITY SENSOR	895001	OUT OF POSITION	20180327006
CL600 2C10 (RJ700)	SKIN PANEL LOWER	SH67037062	PERFORATED	20180201005
CL600 2C10 (RJ700)	FRAME	MM67036112	CORRODED	20180326020
CL600 2C10 (RJ700)	FRAME	MM67036112	CORRODED	20180327013
CL600 2C10 (RJ700)	FRAME REINFORCE ANGLE	SH670370881	CORRODED	20180111005
CL600 2C10 (RJ700)	FUSELAGE SKIN	MM67035146	CORROSION	20180327017
CL600 2C10 (RJ700)	CONNECTOR	J501	NOT REPORTED	20180314005
CL600 2D15 (705)	TRANSFORMER RETIFIER UNIT	TRU3502	FAILED MESSAGE	20180103003
CL600 2D15 (705)	HOSE ASSEMBLY	R271692	LEAKING	20180212027
CL600 2D15 (705)	TIRE	900012001	BLOWN	20180109008
CL600 2D15 (705)	TIRE	900012001	BLOWN	20180109009
CL600 2D24 (RJ900)	ALTERNATING CURRENT PACK		INOPERATIVE	20180226031
CL600 2D24 (RJ900)	AIR CYCLE MACHINE	GG67095009	FAILED	20180111004
CL600 2D24 (RJ900)	CONNECTOR	352019	LOOSE	20180320003
CL600 2D24 (RJ900)	COOLING SYSTEM		BURNING SMELL	20180226025
CL600 2D24 (RJ900)	PACK INLET FLOW SENSOR	GG43620031	NOT REPORTED	20180307010
CL600 2D24 (RJ900)	AUTO PILOT/STALL PROTECTION DISCONNECT SWITCH	STD97926	FAILED	20180327005
CL600 2D24 (RJ900)	LAVATORY SMOKE DETECTOR	47456046	FAULTY	20180123012
CL600 2D24 (RJ900)	CONNECTOR	352019MT	NOT SPECIFIED	20180202009
CL600 2D24 (RJ900)	SPOILER AND FLAP ELECTRONIC CONTROL UNIT	766389P	NOT REPORTED	20180206001
CL600 2D24 (RJ900)	HIGH PRESSURE SHUT OFF VALVE	GG67080001	FAILED	20180212014
CL600 2D24 (RJ900)	COWL ANTI-ICE SHUT OFF VALVE	54011485	FAILED	20180119006
CL600 2D24 (RJ900)	COWL ANTI-ICE VALVE	54011485	FAILED	20180202008
CL600 2D24 (RJ900)	AIR DATA SENSOR HEATER CONTROL	7858063	NOT REPORTED	20180130020
CL600 2D24 (RJ900)	PITOT STATIC PROBE	0856KV10	FAILED	20180125003
CL600 2D24 (RJ900)	INTEGRATED STANBY INDICATOR	C16221ZA01	FAILED IN FLIGHT	20180104009
CL600 2D24 (RJ900)	COCKPIT DISPLAY FAN	AE0804A04	FAILED	20180123010
CL600 2D24 (RJ900)	MAIN LANDING GEAR SELECTOR VALVE ASSEMBLY	2322H000004	FAILED	20180306010
CL600 2D24 (RJ900)	BRAKE SENSOR SENSOR	6007300	OVERHEAT WARNING	20180322013

Make/Model	Part Name	Part Number	Part Condition	SDR No.
CL600 2D24 (RJ900)	BRAKE TEMPERATURE SENSOR	6007300	OVERHEAT	20180320005
CL600 2D24 (RJ900)	WHEEL SPEED TRANSDUCER	6007047	FAILED	20180212012
CL600 2D24 (RJ900)	TIRE	362K821	BLOWN	20180314010
CL600 2D24 (RJ900)	ELECTRONIC CONTROL UNIT	4480000601	FAILED	20180220012
CL600 2D24 (RJ900)	PRESSURE SWITCH	481051	FAILED	20180309002
CL600 2D24 (RJ900)	HARNESS ASSEMBLY	525145	NOT REPORTED	20180209002
CL600 2D24 (RJ900)	ANGLE OF ATTACK SENSOR	C16258AA	FAILED	20180131006
CL600 2D24 (RJ900)	ANGLE OF ATTACK SENSOR	C16258AA	FROZEN	20180109007
CL600 2D24 (RJ900)	ANGLE OF ATTACK SENSOR	C16258AB	NOT REPORTED	20180118001
CL600 2D24 (RJ900)	GLOBAL POSITIONING SYSTEM RECEIVER	8221377001	FAULT	20180206003
CL600 2D24 (RJ900)	OVERWING EMERGENCY EXIT DOOR	SH6703660001	CRACKED	20180118008
CL600 2D24 (RJ900)	DOOR LATCH LANDING	CC67033151	CRACKED	20180228008
CL600 2D24 (RJ900)	FUSELAGE LOWER FRAMES	SH67031353THRUUN	CORROSION	20180220015
CL600 2D24 (RJ900)	LOWER FRAME	CC6703417311	CORRODED	20180209016
CL600 2D24 (RJ900)	JACKING SUPPORT FITTING	CC670321791	CORROSION	20180220013
CL600 2D24 (RJ900)	FLOOR CROSS-BEAM	MM67035313003	CORROSION	20180301003
CL600 2D24 (RJ900)	FLOOR SILL	SH67032174	CORRODED	20180326015
CL600 2D24 (RJ900)	CIRCUMFERENTIAL BUTT STRAP	SH67032434	CORROSION	20180115021
CL600 2D24 (RJ900)	FRAMES AND STRINGERS		CORRODED	20180222012
CL600 2D24 (RJ900)	FUSELAGE SKIN	SH670316337	PERFORATED	20180305010
CL600 2D24 (RJ900)	SIDE WINDSHIELD	601R3303324SN172	ARCING	20180215015
CL600 2D24 (RJ900)	WINDSHIELD	NP139321	SHATTERED	20180124004
CL600 2D24 (RJ900)	WINDSHIELD/CONTROLLER	NP139321	FAULT	20180205021
CL600 2D24 (RJ900)	SPOILER & STABILIZER CONTROL UNIT	C13045BA04	FAILED	20180104014
CL600 2D24 (RJ900)	ISOLATION CONTROL VALVE	TY214811A	FAILED	20180329008
CL600 2E25 (RJ1000)	PRESSURE SENSOR	D98C09603	WARNING MESSAGE	20180309010
CL600 2E25 (RJ1000)	MAIN LANDING GEAR SELECTOR VALVE ASSEMBLY	2322H000005	FAULTY	20180220003
CL600 2E25 (RJ1000)	WING-TO-FUSE ATTACH FITTING	CC69810103	MIGRATION	20180116011
CL600 2E25 (RJ1000)	WINDSHIELD - SIDE WINDOW	NP13932211	CRACKED	20180104011
DHC 8 400	CABIN PRESSURE CONTROLLER	92146A010401	FAULTY	20180322015

Make/Model	Part Name	Part Number	Part Condition	SDR No.
DHC 8 400	O-RING	NAS161216	FAILED	20180312001
DHC 8 400	SOLENOID SEQUENCE VALVE		STUCK	20180206010
DHC 8 402	DOME NUT	NAS1473R5	CRACKED	20180125012
DHC 8 402	ACTUATOR ASSEMBLY NOSE LANDING GEAR DOOR	478301	BYPASSING	20180218005
DHC 8 402	PARK BRAKE VALVE	60070503	LEAKING	20180220004
DHC 8 402	RECEPTACLE	D3899924WA98SA	CORRODED	20180108014
DHC 8 402	TEMPERATURE PROBE	10300034	PINCHED WIRE	20180327009
CANADAIR				
CL215 1A10	FORWARD LUG	1607143	NOT REPORTED	20180222019
CL215 6B11 (CL215T)	FRONT LOWER SPAR CAP	S6638Z	NOT REPORTED	20180104005
CL215 6B11 (CL215T)	FRONT LOWER SPAR CAP	S6638Z	NOT REPORTED	20180104006
CL215 6B11 (CL215T)	RIGHT-HAND FINLET FITTING	215T212063	CRACKED	20180118003
CL215 6B11 (CL215T)	SPAR CAP		CRACKED	20180122018
CL215 6B11 (CL215T)	TAIL FINLET	215T2120022	CRACKED	20180117009
CL215 6B11 (CL215T)	PISTON SEAL	MS28775334	SPLIT	20180205025
CL215 6B11 (CL415)	BEARING ROLLER	MS276435	NOT REPORTED	20180223016
CL215 6B11 (CL415)	FINLET ATTACH FITTING	215T2120503	CRACKED	20180205022
CL215 6B11 (CL415)	RUDDER	215T24200	SPRING TAB	20180105004
CL215 6B11 (CL415)	LINE ASSEMBLY	215T6412930	CRACKED	20180315003
CL215 6B11 (CL415)	LOWER MEMBER	1606013	OVERHAULED	20180214009
CL215 6B11 (CL415)	LOWER MEMBER	1606013	INSTALLED	20180227013
CL215 6B11 (CL415)	LOWER MEMBER	1606013	OVERHAULED	20180214010
CL215 6B11 (CL415)	LOWER MEMBER	1606013	ON AIRCRAFT	20180227012
CL215 6B11 (CL415)	ATTACHMENT FITTINGS		NOT REPORTED	20180315011
CL600 2B16 (601 3R)	MAIN LANDING GEAR INDICATOR	9111	FAILED	20180223014
CL600 2B16 (601 3R)	CRANK	6003189021	CRACKED	20180323015
CL600 2B16 (604)	COMMUNICATION SYSTEM		NOT REPORTED	20180219007
CL600 2B16 (604)	FUEL SYSTEM		CHAFED	20180313012
CL600 2B16 (604)	PROXIMITY SENSOR		BENT	20180123028
CL600 2B16 (604)	MAIN GEAR TIRES X2	276970	PIECES MISSING	20180115019

Make/Model	Part Name	Part Number	Part Condition	SDR No.
CL600 2B16 (604)	REAR SPAR LOWER CAP & VERTICAL WEB		MANUAL INSPECTION	20180209010
CL600 2B19 (RJ100)	NOSE LANDING GEAR ASSEMBLY	16040117	SEIZED	20180220010
CESSNA				
172M	MIXTURE CONTROL	MC60072	FAILED	20180130014
172N	FLAP UP LIMIT SWITCH FAILED	S19061	FAILED	20180207025
172N	RIGHT-HAND MAGNETO	4371	DAMAGED	20180212019
172R	ENGINE DRIVEN VACUUM PUMP	AA3215CC	SHEARED	20180216004
172R	OIL PRESSURE SWITCH	83278	FAILED	20180115020
172R	TACHOMETER CABLE	S255015	USED	20180213004
172S	CIRCUIT BREAKER SWITCH	CM35895	NOT DETECTED	20180223006
182K	CYLINDER ASSEMBLY	658597BP3	WORN	20180213012
208B	CENTER SPRING	26410149	CRACKED	20180206008
208B	SUPPORT BRACKET	26111447	CRACKED	20180118005
208B	FLIGHT CONTROL		NOT REPORTED	20180228004
208B	RIGHT-HAND AILERON DIRECT CABLE	2660001152	REPAIRABLE	20180227014
510	NOSE GEAR ASSEMBLY	70120104	SERVICEABLE	20180226021
525A	WELD ASSEMBLY-TORQUE TUBE RIGHT-HAND	63341034	NEW	20180226033
560(ENCORE)	FLAP PRESELECT CABLE	65651201	FRAYED	20180129009
560(ENCORE)	LEFT-HAND GEAR SAFETY SWITCH	S31762	IN SERVICE	20180201008
560XL	HORIZONTAL STABILIZER ACTUATOR		NOT REPORTED	20180208009
560XL	TAIL DE-ICE BOOT		NOT REPORTED	20180130004
560XLS	AUTO PILOT SERVO CABLE - RUDDER	666000248	BROKEN	20180313011
560XLS	DIODE	S31064	MELTED	20180124006
750	HEADLINER	46110966	PIECE BROKEN	20180122011
CONVAIR - CAN				
340	HYDRAULIC FILTER HOUSING ASSEMBLY	569412	CRACKED	20180103010
580	CABLE GUARD	Q288407Q288101	NOT REPORTED	20180222009
DASSAULT				
FALCON 10	SOLID LINE	F10A722142	CRACKED	20180308005
FALCON 2000EX	GENERATOR		FAILED	20180326010

Make/Model	Part Name	Part Number	Part Condition	SDR No.
DEHAVILLAND - CAN				
DHC 2 MKI	FLAP ARM ASSEMBLY	C2W135A	CORRODED	20180315007
DHC 2 MKI	REAR SPAR		CRACKED	20180124001
DHC 2 MKIII	TRIM BLOCK	VALCT2T102327	CORRODED	20180221018
DHC 3	TIE BAR	C3FS142	BENT	20180201009
DHC 6 300	ELEVATOR CONTROL CABLE	TBC6CF11471	USED	20180219008
DHC 6 300	INTEGRATED AVIONICS SYSTEM	G950	IN SERVICE	20180123040
DHC 6 300	INTEGRATED AVIONICS SYSTEM	GARMING950	IN SERVICE	20180118006
DHC 6 300	DUCT ASSEMBLY LEFT-HAND GLARESHIELD	APST579300	IN SERVICE	20180216002
DHC 6 300	AILERON		NOT REPORTED	20180305016
DHC 6 300	BRACKET	C6EC1124	CRACKED	20180305012
DHC 6 300	COWLING		NOT REPORTED	20180305013
DHC 6 300	COWLING		NOT REPORTED	20180305014
DHC 6 300	COWLING		NOT REPORTED	20180305015
DHC 7 103	PRESSURE MANIFOLD ASSEMBLY	ADA35821	ON CONDITION	20180129011
DHC 8 102	AIR CYCLE MACHINE		SEIZED	20180115022
DHC 8 102	AIR CYCLE MACHINE		FAULTY	20180312005
DHC 8 102	SWITCH	AV1B16581	FAULTY	20180125001
DHC 8 102	HYDRAULIC TUBE	82970009169	CRACKED	20180301002
DHC 8 102	ENGINE DRIVEN PUMP		FAILED	20180103007
DHC 8 102	WIRING		SHORTED	20180323012
DHC 8 102	ACTUATOR	82970018013	LEAKING	20180131009
DHC 8 102	ACTUATOR	82970018013	LEAKING	20180205011
DHC 8 102	BEARING	DSC26	FAILED	20180112017
DHC 8 102	PARK BRAKE CYLINDER		CRACKED	20180226023
DHC 8 103	PRESSURE TRANSMITTER	APT7510004000SW	BROKEN	20180208007
DHC 8 103	FLIGHT SPOILER SUPPORT BRACKET	85711455003	CRACKED	20180115009
DHC 8 106	SCREW	NAS110138	SHEARED	20180328003
DHC 8 106	WIRE	30612022F12AAND2	CHAFFED	20180202012
DHC 8 106	LOWER BEARING	101363	SEIZED	20180328001

Make/Model	Part Name	Part Number	Part Condition	SDR No.
DHC 8 106	RELAY		FAULTY	20180322016
DHC 8 201	BRAKE UNIT		FAILED	20180112019
DHC 8 202	VENTURY		BLOCKED	20180305008
DHC 8 301	ELECTRICAL CONNECTOR		BURNT	20180216003
DHC 8 301	PHOENIX DIRECT CURRENT GENERATOR CONTROL UNIT	GC1010245DV	LOW VOLTAGE	20180131008
DHC 8 301	HYDRAULIC LINE	82950010161	HOLE	20180112014
DHC 8 301	ROTARY SWITCH	682175	BROKEN	20180122014
DHC 8 301	AIRFRAME WIRING		CHAFFED	20180212002
DHC 8 301	LAYSHAFT	85210142001	CORROSION	20180214004
DHC 8 301	AIRFRAME WIRING HARNESS		NOT REPORTED	20180123005
DHC 8 301	RIB		CRACKED	20180312009
DHC 8 311	MAIN LANDING GEAR DOOR LINKAGE		WORN	20180316014
DHC 8 311	ACTUATOR		FAULTY	20180305009
DHC 8 311	BEARING	L71304920629L812	INSPECTED	20180212015
DHC 8 311	NOSE LANDING GEAR SOLENOID SEQUENCE VALVE		FAULTY	20180215014
DHC 8 311	FRAME	85334311103	CORRODED	20180329011
DHC 8 311	OIL PRESSURE SWITCH		UNSERVICEABLE	20180122004
DHC 8 314	DITCHING DAM		NOT DEPLOYING	20180206006
DHC 8 314	CIRCUIT BREAKER		FAULTY	20180112012
DHC 8 315	HYDRAULIC PUMP	PV30323	LEAKING	20180222011
DHC 8 315	TRANSDUCER		FAULTY	20180208004
DHC 8 400	ALTERNATING CURRENT PACKS		NOT REPORTED	20180130007
DHC 8 400	BY-PASS VALVE	8209145	STUCK	20180207027
DHC 8 400	PACK FLOW CONTROL VALVE	8209026	FAULTY	20180205010
DHC 8 400	CABIN PRESSURE CONTROLLER	92146A010401	FAULTY	20180221007
DHC 8 400	CABIN PRESSURE CONTROLLER	92146A010401	FAULTY	20180327015
DHC 8 400	CONNECTOR		DIRTY	20180302016
DHC 8 400	REFUEL PANEL		OVERHEAT	20180207009
DHC 8 400	REFUEL PANEL		OVERHEAT	20180207012
DHC 8 400	O-RING	NAS161216	FAILED	20180307001

Make/Model	Part Name	Part Number	Part Condition	SDR No.
DHC 8 400	P-CLAMP	M8505226	FAILED	20180208002
DHC 8 400	POWER TRANSFER UNIT PRESSURE HOSE		LEAKING	20180221012
DHC 8 400	ENGINE DRIVEN PUMP	6617304	FAILED	20180321002
DHC 8 400	ENGINE DRIVEN PUMP		FAULTY	20180208001
DHC 8 400	DE-ICER BOOT		HOLE	20180220001
DHC 8 400	ENGINE INTAKE ADAPTER HEATER	4100S02805	UNSERVICEABLE	20180322014
DHC 8 400	ELECTRICAL RELAY	MS24166D1	STUCK	20180306001
DHC 8 400	WINDSHIELD TERMINAL		LOOSE	20180312006
DHC 8 400	SOLENOID SEQUENCE VALVE		FAULTY	20180301004
DHC 8 400	NOSE LANDING GEAR	47200	BRACKET	20180226012
DHC 8 400	NOSE LANDING GEAR DRAG STRUT	47300	LOCKING MECHANISM	20180112015
DHC 8 400	NOSE LANDING GEAR LOCK ACTUATOR	47400	FAULTY	20180116013
DHC 8 400	NOSE LANDING GEAR PIVOT TUBE	473401	DAMAGED	20180306012
DHC 8 400	NOSE LANDING GEAR PIVOT TUBE	473401	INCORRECT RIGGING	20180306011
DHC 8 400	NOSE LANDING GEAR #2 DOWN LOCK SENSOR		LOOSE	20180227004
DHC 8 400	NOSE LANDING GEAR		SERVICED	20180129010
DHC 8 400	SENSOR		RIGGED	20180327011
DHC 8 400	UPLOCK		BROKEN SPRINGS	20180319004
DHC 8 400	UPLOCK SPRING		BROKEN	20180205024
DHC 8 400	DOOR ACTUATOR	478303	BYPASSING	20180206004
DHC 8 400	ACTUATOR		FAULTY	20180119011
DHC 8 400	NOSE LANDING GEAR DOOR ACTUATOR		BYPASSING	20180205016
DHC 8 400	ACTUATOR		FAULTY	20180327016
DHC 8 400	SELECTOR HANDLE		FAULTY	20180306007
DHC 8 400	SELECTOR PANEL		FAULTY	20180316015
DHC 8 400	WHEEL SPEED TRANSDUCER		FAULTY	20180205018
DHC 8 400	#2 MAIN LANDING GEAR TIRE		BURST	20180122013
DHC 8 400	MAIN LANDING GEAR WHEEL BEARING		FAILED	20180312010
DHC 8 400	NOSE WHEEL		FAILURE	20180220005
DHC 8 400	NOSE WHEEL STEERING		RIGGING	20180227002

Make/Model	Part Name	Part Number	Part Condition	SDR No.
DHC 8 400	LEFT-HAND MAIN LANDING GEAR DOOR SENSOR		RIGGING	20180319006
DHC 8 400	NOSE LANDING GEAR DOOR SENSOR		OPEN CIRCUIT	20180213002
DHC 8 400	NOSE LANDING GEAR DOOR SENSOR		RIGGING	20180205020
DHC 8 400	SENSOR		FAULTY	20180306008
DHC 8 400	SOLENOID SEQUENCE VALVE		FAULTY	20180313017
DHC 8 400	SOLENOID SEQUENCE VALVE		FAULTY	20180314012
DHC 8 400	CONNECTOR		DAMAGED	20180116015
DHC 8 400	PROXIMITY SENSOR	401020201	FAULTY	20180226015
DHC 8 400	SEAL	502212	CUT	20180227010
DHC 8 402	PACK FLOW CONTROL	8209026	INTERNALLY FAILED	20180118002
DHC 8 402	REHEATER INLER DUCT	8215531	DAMAGED	20180328006
DHC 8 402	CABIN PRESSURE CONTROLLER	92146A010401	INTERNAL FAILURE	20180216006
DHC 8 402	FLOW CONTROLLER & SHUT-OFF VALVE	82090287226	LOOSE	20180108012
DHC 8 402	ALTERNATING CURRENT POWER FEED CONNECTORS	9811JANDPCONNECT	LOOSE	20180316003
DHC 8 402	ALTERNATING CURRENT POWER FEED CONNECTORS	9811JANDPCONNECT	LOOSE	20180315006
DHC 8 402	CONTACTOR	10962242	FAILED	20180102005
DHC 8 402	CONTACTOR	227CC02AY00	FAILED	20180218003
DHC 8 402	CONTACTOR	227CC02AY00	INTERMITTENT	20180228001
DHC 8 402	#2 ALTERNATING CURRENT GENERATOR	11522186	INTERMITTENT	20180215013
DHC 8 402	CONNECTOR		SHORTED	20180103008
DHC 8 402	ALTERNATING CURRENT POWER CONNECTOR	9811JP711	BURNT	20180313010
DHC 8 402	CONTACTOR	10962242	FAILED	20180214015
DHC 8 402	LIQUID WARMER/HOT JUG		INTERNALLY FAILED	20180323014
DHC 8 402	CONNECTOR	MS3456KS14S5S	INTERNALLY SHORT	20180218001
DHC 8 402	ROLL ACTUATOR	C18117AA	BINDING	20180329006
DHC 8 402	INPUT/OUTPUT PROCESSOR	C12432AB09	FAILED	20180316001
DHC 8 402	POWER CONTROL UNIT FITTING	85517347002	CRACKED	20180227008
DHC 8 402	PROCESSOR INPUT/OUTPUT	C12432AB09	FAILED	20180214013
DHC 8 402	CIRCUIT BREAKER		RESET	20180305002
DHC 8 402	PRESSURE SWITCH		FAILED	20180130019

Make/Model	Part Name	Part Number	Part Condition	SDR No.
DHC 8 402	THREADED FUEL COUPLING		BONDING CHECK	20180305017
DHC 8 402	B-NUT FITTING	82974345002	LOOSE	20180328011
DHC 8 402	HYDRAULIC PUMP	6617305	THREADS DAMAGED	20180130013
DHC 8 402	HYDRAULIC PUMP ASSEMBLY	6617304	FAILED	20180329003
DHC 8 402	TIMER MONITOR UNIT		FAULTY	20180319012
DHC 8 402	BRUSH BLOCK		BURNT	20180319014
DHC 8 402	DE-ICE HARNESS	697037220	INTERNAL DAMAGE	20180328010
DHC 8 402	CONNECTORS		BURNT	20180123031
DHC 8 402	FLEX HOSE	46455123	NEW FROM STORE	20180301005
DHC 8 402	ACTUATOR ASSEMBLY DOOR	478301	FAILED	20180115010
DHC 8 402	NOSE LANDING GEAR PIVOT TUBE DRAG STRUT ASSEMBLY	473401	BENT	20180307007
DHC 8 402	NOSE LANDING GEAR		FAULTY	20180323016
DHC 8 402	SPUR GEAR SHAFT		FAILED	20180117007
DHC 8 402	LATCH UPLOCK	465015	CHIPPED	20180328013
DHC 8 402	NOSE LANDING GEAR ACTUATOR	478301	INTERMITTENT	20180123029
DHC 8 402	ACTUATOR ASSEMBLY DOOR	478301	FAILED	20180325001
DHC 8 402	PLUG	FE27910003	UNSCREWED	20180309001
DHC 8 402	WHEEL SPEED TRANSDUCER	6007047	UNSERVICEABLE	20180223005
DHC 8 402	PARK BRAKE CONTROL VALVE	60070494	FAILED	20180218002
DHC 8 402	BOLT	431329	MISSING	20180323017
DHC 8 402	TIE BOLT	431329	FRACTURED	20180323011
DHC 8 402	PROXIMITY SENSOR	301450601	OUT OF RIG	20180205017
DHC 8 402	HARNESS ASSEMBLY WEIGHT ON WHEELS	472017	SHORTED	20180226029
DHC 8 402	SENSOR		FAILED	20180102010
DHC 8 402	WIRING		CHAFFED	20180117010
DHC 8 402	O2 CYLINDER		LEAKING	20180306009
DHC 8 402	CONTACTOR	227CC02AY00	FAILED	20180218004
DHC 8 402	AFT CARGO DOOR LATCH	85237841109	OPEN	20180320006
DHC 8 402	AFT CARGO DOOR LATCH	85237841109	UNLOCKED	20180328004
DHC 8 402	AFT CARGO DOOR SEAL	LA502213	DAMAGED	20180226020

Make/Model	Part Name	Part Number	Part Condition	SDR No.
DHC 8 402	BAGGAGE DOOR		OPEN IN FLIGHT	20180130021
DHC 8 402	NOSE LANDING GEAR TRUNNION ASSEMBLY	85310019	SHEARED	20180226028
DHC 8 402	STRINGER 31P SPLICE	85310015N150901N	NOT REPORTED	20180302013
DHC 8 402	WINDSHEILD	NP15790120	CRACKED	20180208006
DHC 8 402	DE-ICE BOOT	51SP162482	RUPTURE	20180110003
DHC 8 402	RIGHT-HAND OUTBOARD FLAP TRAILING EDGE ASSEMBLY	85750232012	CRACKED	20180228006
DHC 8 402	FOREIGN OBJECT DEBRIS DOOR ACTUATOR	LA11A2104	INTERNAL FAILURE	20180102004
DHC 8 402	OIL COOLER	D2887915A	LEAKING	20180102003
DIAMOND - AS				
DA 42 NG	FUEL CAP/MOUNTING RING		NOT REPORTED	20180327010
DIAMOND - CAN				
DA 20 C1	LATCH HOOK	2256400001	CRACKED	20180307008
DA 20 C1	STEEL NUT SELF LOCKING	MS210423	MISSING	20180312004
DA 20 C1	RUDDER CABLE		FRAYED	20180209006
DA 20 C1	CANOPY LATCH HOOK	2256400001	CRACKED	20180216005
DA 20 C1	HOOK	2256400001	CRACKED	20180125018
DA 62	MAIN FUEL TANK VENT	D672817100101	KINKED	20180227001
DA 62	SEAT BELT PASSENGER	502BJ5701	NOT FASTENED	20180214012
DA 62	PASSENGER REAR WINDOW	D675623040103	DISBONDING	20180202010
EMBRAER				
EMB 135KL	SEAT TRACK	14530659007	NOT REPORTED	20180207021
ERJ 170 200 SU	WINDSHIELD	NP18730119	NOT REPORTED	20180327008
ERJ 190 100 IGW	FLAP SKEW SENSOR	59128437	FAILED	20180223004
ERJ 190 100 IGW	ACTUATOR INPUT-OUTPUT PROCESS	70284321901	FAILED	20180315008
ERJ 190 100 IGW	LANDING GEAR BRAKE		NOT REPORTED	20180226016
ERJ 190 100 IGW	BRAKE		NOT REPORTED	20180305001
ERJ 190 100 IGW	BRAKE CONTROL MODULE	14209114	FAILED	20180305003
ERJ 190 100 IGW	AUXILIARY POWER UNIT		NOT REPORTED	20180326013
EUROCOPTER FRANCE				
EC 130 B4	RIGHT-HAND LATERAL WINDOW	350A25904820	CRACKED	20180228007

Make/Model	Part Name	Part Number	Part Condition	SDR No.
EC 130 B4	WINDOW/CEILING RIGHT-HAND	350A25903921	CRACKED	20180125016
EC 130 B4	RIGHT-HAND SERVO	GOODRICH	FAULTY	20180302015
FAIRCHILD				
SA227AC	ENCODING ALTIMETER	51928704D001	FROZEN	20180208008
SA227AC	OIL PRESSURE LINE	31080811	CRACKED	20180308003
GULFSTREAM - ISRAEL				
GULFSTREAM G150	BUS BAR	WW588379611WW588	CORRODED	20180115014
KAMOV				
KA32A11BC	LOWER SLIDER	1044210412020010	BEARING HOUSING	20180131014
LEARJET				
45	AILERONS		JAMMED	20180222013
45	ENGINE THROTTLE RETARD ACTUATOR	54533039	NOT REPORTED	20180115008
45	GENERATOR	2308023B	BEARING FAILURE	20180207028
45	PROBE PITOT	6634100000001	NOT REPORTED	20180227003
60	HYDRAULIC RETURN LINE	6000100184	NOT REPORTED	20180204001
LOCKHEED				
188C	FIRE LOOP	705156	WORN	20180215011
MOONEY				
M20D	HINGE BOLT	AN422A	SHEARED	20180126005
PILATUS - SW				
PC12 47E	MAIN LANDING GEAR DOWN AND LOCK SWITCH WIRING		NOT REPORTED	20180129012
PC12 47E	WIRE HARNES		BROKEN WIRE	20180131010
PIPER				
PA23 250	BOLT	691327	BROKEN	20180316005
PA23 250	LINE ASSEMBLY	1771903	CHAFED	20180220016
PA30	LEFT & RIGHT LANDING GEAR REAR SUPPORT BULKHEAD	20324022032403	CRACK	20180223008
PA31	ALTIMETER	5035PP24	UNSERVICEABLE	20180301006
PA31 350	BOLT	AN413	BROKEN	20180316007

Make/Model	Part Name	Part Number	Part Condition	SDR No.
PA31 350	BRACKET ASSEMBLY	5246900	BROKEN	20180316011
PA31 350	EMERGENCY FUEL PUMP		NOT REPORTED	20180309009
PA31 350	WIPER ARM ASSIEMBLY	XW215591	NOT REPORTED	20180108013
PA34 200	NOSE GEAR MOUNT ASSEMBLY	95551023	IN SERVICE	20180221008
PA44 180	FLAPPER VALVE	87327003	BROKEN	20180213009
PA44 180	PUMP	38992812	NOT REPORTED	20180302020
PA44 180	MUFFLER	PIM0010	BLOCKED	20180326021
ROBINSON				
R66	THROTTLE CABLE	C52210	METAL FATIGUE	20180305005
SIKORSKY				
S76C	ANGLE BALANCE SPRING	7640003014114	INSTALLED INCORRECTLY	20180307009
S92A	DAMPER MAIN ROTOR	9210615801103	DELAMINATED	20180104001
S92A	HYDRAULIC PUMP	92650115811	SHEARED	20180110007
S92A	MAIN GEARBOX FILTERS	ACC683F163923511	DAMAGED	20180223012
VANS				
RV10	ALTERNATOR	AL12EI60B	SERVICEABLE	20180211001
VIKING CANADA				
DHC 6 400	ELEVATOR CONTROL CABLE	EO690531	NEW	20180322017
DHC 6 400	BOOST PUMP	C6SC10057	NEW	20180222018
DHC 6 400	FUEL PRESSURE SWITCH	P18MH109	NEW	20180123038
DHC 6 400	FUEL PRESSURE SWITCH	P18MH109	NEW	20180123039
DHC 6 400	FUEL PRESSURE SWITCH	P18MH109	NEW	20180219009
DHC 6 400	HYDRALIC PRESSURE SWITCH	P12MH149	NEW	20180301007
DHC 6 400	HYDRAULIC SWITCH	P12MH149	NEW	20180323020
DHC 6 400	TEMPERATURE BULB	MA280341	NEW	20180115023
ENGINE				
ALLISON				
250-C20	COMPRESSOR ASSEMBLY	6890550	CRACKED	20180219011
250-C20	POWER TURBINE GOVERNOR	23065121	USED	20180227011
250-C20B	GEARBOX	CAG33982	METAL GENERATION	20180219010

Make/Model	Part Name	Part Number	Part Condition	SDR No.
250-C30P	FREEWHEEL BOSS		CHIPPED	20180321003
250-C47B	COMPRESSOR		NOT REPORTED	20180108008
501-D13D	ENGINE STARTER	383350121	NOT REPORTED	20180309007
AUSTRO ENGINE				
E4-B	PROPELLER GOVERNOR	P87716	ON CONDITION	20180125015
AVCO LYCOMING				
IO-540-AE1A5	ENGINE		MAKING METAL	20180315009
LO-360-A1H6	DISTRIBUTOR	K3008	BROKEN	20180323007
O-320-D2J	MAGNETO	4371	SPARK	20180115024
O-320-D2J	EXHAUST VALVE SEAT	72058	WORN	20180116016
TIO-540-AK1A	FUEL PUMP	RG1798OUM	UNSEVICEABLE	20180308004
TIO-540-J2BD	TURBO MOUNT	LW18302	OVERHAULED	20180309005
TIO-540-J2BD	STUD	3813	LOOSE	20180316009
BOMBARDIER ROTAX				
912 S3	FUEL PUMP/MECHANICAL	893115	NOT REPORTED	20180207008
CFM INTERNATIONAL				
CFM56-5A1	FAN ROTOR STAGE 1 BLADE	3360077120	BENT	20180115013
CFM56-5A5	AIR INLET		NOT REPORTED	20180209004
CFM56-5A5	FAN ROTOR STAGE 1 BLADE	3360077120	BENT	20180115015
CFM56-5A5	OIL SUPPLY TUBE	3360986010	CRACKED	20180312003
GARRETT				
TPE331-10	ENGINE	TPE33110	UNSERVICEABLE	20180108006
TPE331-10UA	HIGH SPEED PINION GEAR	310117017	OVERHAULED	20180207026
TPE331-10UA-511G	OIL SCAVENGE PUMP	8659307	OVERHAULED	20180105003
TPE331-11U	COVER	3165700	CRACKED	20180202011
TPE331-11U-612G	COMBUSTOR	31071731	OVERHAULED	20180122017
GENERAL ELECTRIC				
CF34-3B	OIL SYSTEM		NOT REPORTED	20180328005
CF34-3B1	FUEL CONTROL UNIT	414T70P02	DAMAGED	20180203008
CF34-3B1	RPM INDICATING		NOT REPORTED	20180226027

Make/Model	Part Name	Part Number	Part Condition	SDR No.
CF34-8C1	FUEL METERING UNIT	4120T01P02	NOT REPORTED	20180130017
CF34-8C1	FULL AUTHORITY DIGITAL ENGINE CONTROL	111E9320G59	NOT REPORTED	20180212010
CF34-8C5B1	ENGINE	CF348C5B1	NOT REPORTED	20180214008
CF34-8C5B1	ENGINE	CF348C5B1	NOT REPORTED	20180202006
CF6-50C2	DUCT 8TH STAGE BLEED	23121501	CRACKED	20180323018
CF6-50C2	OIL STRAINER CLOG SWITCH	215N0434	UNSERVICEABLE	20180302022
HONEYWELL				
AS907-1-1A	ENGINE		NOT REPORTED	20180112021
AS907-1-1A	ENGINE		NOT REPORTED	20180302019
AS907-2-1A	#4 CARBON SEAL		NOT REPORTED	20180124002
AS907-2-1A	ENGINE		NOT REPORTED	20180302018
AS907-2-1A	ENGINE OIL PUMP	30387043	NOT REPORTED	20180129015
KLIMOV				
TB3-117BMA	VARIABLE GUIDE VANE HYDRAULIC ACTUATOR	788391801	LEAKING	20180131013
PRATT & WHITNEY-CAN				
PT6A-140	AIRFRAME OIL COOLER		NOT REPORTED	20180119001
PT6A-27	T5 BUS BAR	3027628	IN SERVICE	20180112016
PT6A-34	LARGE EXIT DUCT	310926302	NOT REPORTED	20180125017
PT6A-41	BLEED OFF VALVE		NOT REPORTED	20180226001
PT6A-42	OIL FILLER NECK		NOT REPORTED	20180314002
PT6A-60A	SERVICING		NOT REPORTED	20180323006
PT6A-60A	DRIVE END BEARING	3CPE003600918	WORN	20180214011
PT6A-62	AIR SEAL POWER TURBINE ROTOR	310976701	UNSERVICEABLE	20180108010
PT6A-67D	PROPELLER GOVERNOR	311849603	NOT REPORTED	20180119005
PT6A-67D	BOLT MACHINE HEXAGON	MS949034	UNSERVICEABLE	20180123008
PT6A-67D	GASKET - OVERSPEED GOVENOR	FAAPMAVE31189530	NEW AT INSTALL	20180129014
PT6C-67C	FUEL IMPENDING BYPASS SWITCH		LEAKING	20180302007
PW120A	FUEL CONTROL		NOT REPORTED	20180226030
PW123	CANNON PLUGS		DAMAGED PINS	20180115017
PW123	PROPELLER CONTROLS		NOT REPORTED	20180214003

Make/Model	Part Name	Part Number	Part Condition	SDR No.
PW123	IGNITION WIRING		BURNT CONNECTOR	20180307011
PW123C	TORQUE SENSOR CONDITIONING UNIT		NOT REPORTED	20180203001
PW123D	SERVICING		NOT REPORTED	20180205001
PW124B	LOW PRESSURE BLADE	312270201	UNSERVICEABLE	20180328009
PW127E	OIL SYSTEM		NOT REPORTED	20180205005
PW127E	PACKING		LEAKING	20180123001
PW127M	PROPELLER ELECTRONIC CONTROLLER		NOT REPORTED	20180302009
PW127M	ENGINE ELECTRICAL CONNECTORS		NOT REPORTED	20180112002
PW127M	POWERPLANT WIRING		NOT REPORTED	20180205002
PW127M	CASE-GAS GENERATOR ASSEMBLY	307006201	NOT REPORTED	20180116002
PW127M	GAS GENERATOR CASE		LEAKING	20180205004
PW127M	CASE-GAS GENERATOR ASSEMBLY	307006201	NOT REPORTED	20180122002
PW127M	FUEL MANIFOLD		UNSERVICEABLE	20180320007
PW127M	FUEL NOZZLE		NOT REPORTED	20180222004
PW127M	NOZZLE		UNSERVICEABLE	20180308008
PW127M	OIL PRESSURE TRANSDUCER		NOT REPORTED	20180326004
PW1500G	VARIABLE FREQUENCY GENERATOR	C07500043003	FAILED	20180314003
PW1500G	ENGINE		NOT REPORTED	20180329002
PW1500G	ENGINE ASSEMBLY	PW1524G	FAILED	20180212013
PW1500G	ENGINE ASSEMBLY	PW1521G3	FAILED	20180115007
PW1500G	ENGINE ASSEMBLY	PW1521G3	FAILED	20180123006
PW1500G	ENGINE ASSEMBLY	PW1524G3	FAILED	20180129008
PW1500G	ENGINE ASSEMBLY	PW1524G3	FAILED	20180219001
PW1500G	ENGINE ASSEMBLY	PW1521G3	DEBRIS	20180319001
PW1500G	ENGINE ASSEMBLY	PW1524G3	DAMAGED	20180309006
PW1500G	ENGINE COMBUSTION SECTION		NOT REPORTED	20180209003
PW1500G	ENGINE ASSEMBLY	PW1524G3	FAILED	20180221001
PW1500G	P2/T2 HEATER	1020472	FAILED	20180222005
PW1500G	AIR/OIL COOLER	1018768	LEAKING	20180220002
PW1500G	HEAT EXCHANGER AIR/OIL	1018768	LEAKING	20180319002

Make/Model	Part Name	Part Number	Part Condition	SDR No.
PW150A	SERVICING		NOT REPORTED	20180226007
PW150A	FUEL SYSTEM		NOT REPORTED	20180302006
PW150A	ENGINE	PW150A	OIL LOSS	20180103005
PW150A	O-RING	ST6202116	NOT REPORTED	20180119002
PW150A	ENGINE		NOT REPORTED	20180220014
PW150A	TURBINE		NOT REPORTED	20180220011
PW150A	SEAL-#4 BEARING	304905501	NOT REPORTED	20180116003
PW150A	CARBON SEAL		INTERNAL OIL LEAK	20180322006
PW150A	OIL PUMP ASSEMBLY	301712108	LEAKING	20180102006
PW150A	OIL PRESSURE REGULATOR		NOT REPORTED	20180112004
PW150A	29 BEARING		CHIPPED	20180111001
PW306D	#3 BEARING CARBON SEAL		NOT REPORTED	20180119003
PW535B	ENGINE ELECTRONIC CONTROLLER		NOT REPORTED	20180203003
PW545A	OIL SYSTEM		NOT REPORTED	20180112010
PW545A	ENGINE ASSEMBLY	31J190001	NOT REPORTED	20180115005
PW545A	THROTTLE CABLE		NOT REPORTED	20180112006
PW545B	THRUST REVERSER SWITCH		NOT REPORTED	20180115006
PW610FA	MAIN OIL PRESSURE/MAIN OIL TEMPERATURE SENSOR	35C155104	NOT REPORTED	20180123004
PW615FA	#4 BEARING CARBON SEAL		NOT REPORTED	20180313005
PRATT & WHITNEY-USA				
PW1521G3	ENGINE ASSEMBLY	PW1521G3	DEBRIS	20180108002
PW4060	VIBRATION ANALYZER		NOT REPORTED	20180319008
R-985-AN-1	IMPELLER SHAFT ASSEMBLY	19559	BEARING FAILURE	20180207024
ROLLS ROYCE - UK				
RB211-535E4-37	CONNECTOR	2507148	UNSERVICEABLE	20180221006
ROLLS ROYCE - USA				
250-C300/A1	STARTER GENERATOR	RR30000412	OVERHAUL	20180319017
TAY 611-8	UNION DOUBLE ENDED TUBE ELBOW	AS27467	CRACKED	20180308002
TELEDYNE CONTINENTAL				
IO-240-B	MECHANICAL FUEL PUMP	6533512	LEAKING	20180209008

Make/Model	Part Name	Part Number	Part Condition	SDR No.
IO-240-B	MECHANICAL FUEL PUMP	6533514A5	LEAKING	20180330001
IO-360-G	ENGINE OIL SYSTEM		NOT REPORTED	20180220007
TSIO-520-NB	NUT	652541	USED	20180212017
TURBOMECA				
ARRIEL 1D1	DRAIN VALVE	174120070	LEAKING	20180208010
PROPELLER				
DOWTY ROTOL				
R408/6-123-F/17	PROPELLER CONTROL UNIT	697073003	FAULTY	20180309012
R408/6-123-F/17	PROPELLER ELECTRONIC CONTROLLER	699018003	MALFUNCTION	20180226009
HARTZELL				
HC-B3TN-3D	BALL BEARING	B61442	CRACKED	20180208018
HC-B3TN-3D	HUB	84060	UNSERVICEABLE	20180125013
HC-B3TN-3DY	BALL BEARING	B61442	CRACKED	20180208012
HC-B3TN-3DY	BALL BEARING	B61442	CRACKED	20180208013
HC-B3TN-3DY	BALL BEARING	B61442	CRACKED	20180208014
HC-B3TN-3DY	BALL BEARING	B61442	CRACKED	20180208017
HC-B3TN-3DY	BALL BEARING	B61442	DAMAGED	20180208016
HC-B3TN-3DY	BEARING RETENTION BLADE	A1851	DAMAGED	20180208015
HC-B4MP-3C	COUNTERWEIGHT SLUG BOLT	B338614H	CRACKED	20180102009
MT PROPELLER				
MTV-15-B	LAG BOLT	A983	BROKEN	20180220018
MTV-6-R	GOVERNOR	P85316	SEPERATED	20180321001
EQUIPMENT				
ACK TECHNOLOGIES				
E04ELT	EMERGENCY LOCATING TRANSMITTER	E04ELT	UNSERVICEABLE	20180211002
ARTEX				
110773	ANTENNA	110773	UNSERVICEABLE	20180111006
DART AEROSPACE				
D41269402	SPACEDOOR	D41269402	FAULTY	20180306004
NARCO				

Make/Model	Part Name	Part Number	Part Condition	SDR No.
ELT10	EMERGENCY LOCATOR TRANSMITTER	ELT10	FAULTY	20180221017